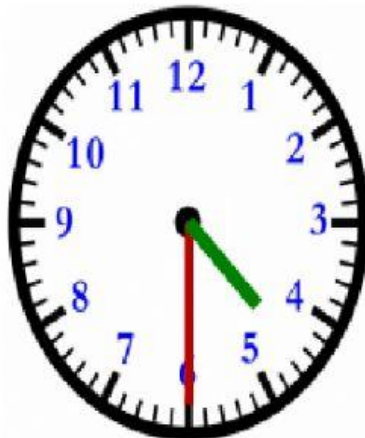
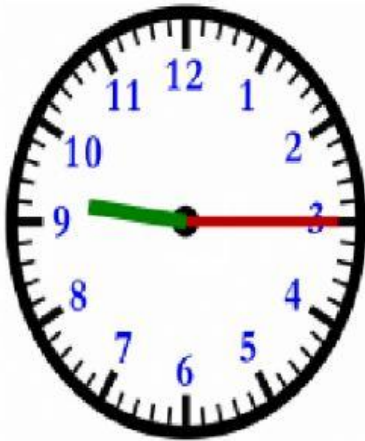
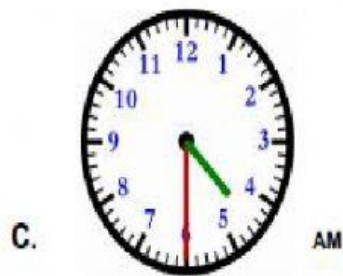
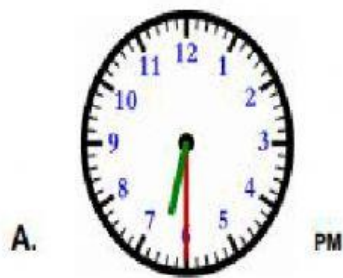
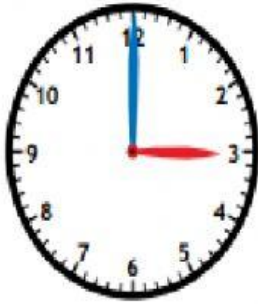


What Time is It ?



Match the letter of each analog clock to a digital clock based on the time shown.





What time is it?

two o'clock
three o'clock
three thirty



What time is it?

six o'clock
nine thirty
six thirty



What time is it?

two thirty
three thirty
one thirty



What time is it?

ten o'clock
one o'clock
ten thirty



What time is it?

nine thirty
eight thirty
nine o'clock



What time is it?

eleven thirty
eleven o'clock
ten o'clock



What time is it?

twelve o'clock
three o'clock
twelve thirty



What time is it?

four thirty
five o'clock
four o'clock



What time is it?

twelve thirty
twelve o'clock
two thirty