



Post-test



ให้นักเรียนเลือกคำตอบที่ถูกต้องที่สุด

1 What does he do?

- a. siolder
- c. soldeir

- b. soldier
- d. soilred



2 What does she do?

- a. teacher
- c. teahcer

- b. tecaher
- d. theacer



3 Where does she work?

- a. bank
- c. post office

- b. airport
- d. hospital



4 What does he do?

- a. police
- c. poliec

- b. polite
- d. pocile



5 What does she do?

- a. chef
- c. chfe

- b. cefh
- d. fhec



6 Where does he work?

- a. hospital
- c. post office

- b. school
- d. market



7 What does she do?

- a. nuesr
- c. nuser

- b. nurse
- d. nuers



8 What does he do?

t_k_ _ker

- a. i,t,o
- c. i,o,t

- b. o,i,t
- d. t,o,i



9 What does he do?

y_ut_ _er

- a. o,b,e
- c. o,u,b

- b. e,o,b
- d. o,b,u



10 What does he do?

amm _

- a. r,e,g
- c. e,r,g

- b. g,e,r
- d. g,r,e



Part 2

ให้นักเรียนดูภาพและเขียนคำศัพท์ให้ถูกต้อง

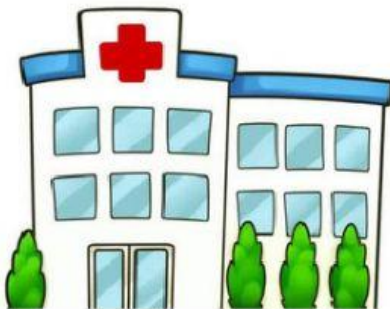
11



12



13



14



15



16



17



18



19



20