



LICEO ALBONOR BILINGUAL EDUCATIONAL UNIT

SCIENCE

SUMMATIVE ASSESSMENT

2ND PARTIAL 2<sup>ND</sup> QUIMESTER

SCHOOL YEAR 2021-2022

STUDENT'S NAME: \_\_\_\_\_

GRADE: \_\_\_\_\_

TEACHER: Mrs. Lourdes Velez

DATE: \_\_\_\_\_

**RECOMMENDATIONS**

1. The online evaluation lasts 40 minutes.
2. Read carefully each statement contained in the online assessment
3. Avoid any attempt of academic dishonesty, in case of incurring in it, it will be sanctioned according to the LOEI articles 223 - 226.
4. During the test, if you have questions, write them in the Zoom chat so that the teacher can help you. Do not activate your microphone during the online assessment.
5. Upload the procedures requested in the assessment in the assignment provided on the Idukay platform.
6. Be clear and specific when writing your answers.

Good luck!

**1.- READ CAREFULLY AND MATCH AS CORRESPOND. ( 2 MARKS)**

- |                               |  |
|-------------------------------|--|
| 1.- Many Cells                | A) by using some of the energy released by chemical reactions.             |
| 2.- Specialized Parts         | B) work together to perform the animal's life functions.                   |
| 3.- Movement                  | C) Some cells may become skin cells, and others may become gut cells.      |
| 4.- Maintain Body Temperature | D) The immature stage of a barnacle, the larva, swims around to find food. |

**2.- READ AND COMPLETE USING THE CORRECT WORDS. (2 MARKS)**

sexual - eukaryotic - consumers - differentiation

- 1.- Animal cells are \_\_\_\_\_, so they have a nucleus.

2.- The cells in a multicellular organism develop into different kinds of cells. This process is called \_\_\_\_\_.

3.- Most animals use \_\_\_\_\_ reproduction.

4.- Animals cannot produce their own food, so they are \_\_\_\_\_.

**3.- MATCH AS CORRESPOND ABOUT GROUPS THAT MAKE UP THE DIVERSITY OF ANIMALS. (2 MARKS)**

1.- One way to categorize animals is .....

A) bilateral symmetry

2.- Some animals, such as sponges are.....

B) radial body plan.

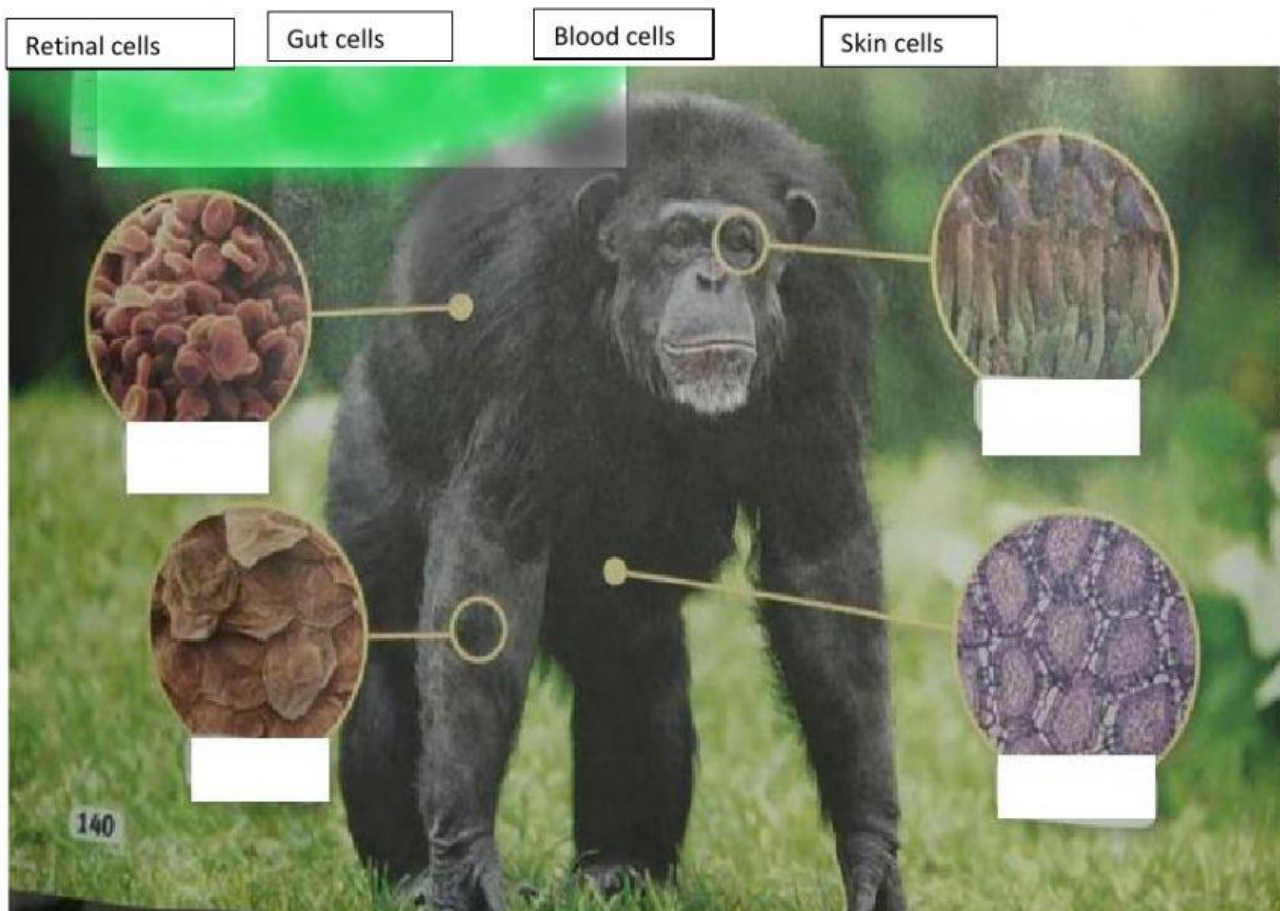
3.- The sea anemone has a.....

C) by symmetry or body plan.

4.- Animals such as tortoises have.....

D) asymmetrical

**4.- LABEL THE PICTURE ABOUT DIFFERENT KINDS OF ANIMAL CELLS. (2 MARKS)**




**5.- WRITE TRUE OR FALSE ABOUT VERTEBRATES ANIMALS**

1.- Tunicates and lancelets, along with vertebrates are part of a group of animals called chordates. TRUE FALSE

2.- Chordates have two traits at some point in their life. TRUE FALSE

3.- Chordate traits in their life are: a notochord, a hollow nerve cord, pharyngeal slits, and a tail. TRUE FALSE

4.- Vertebrates do not have a backbone. TRUE FALSE

	TEACHER	ENGLISH COORDINATOR
NAME:	Prof. Lourdes Vélez	Lcda. Joseline Yagual
SIGNATURE:		
DATE:	February 03rd, 2022	February 04th, 2022