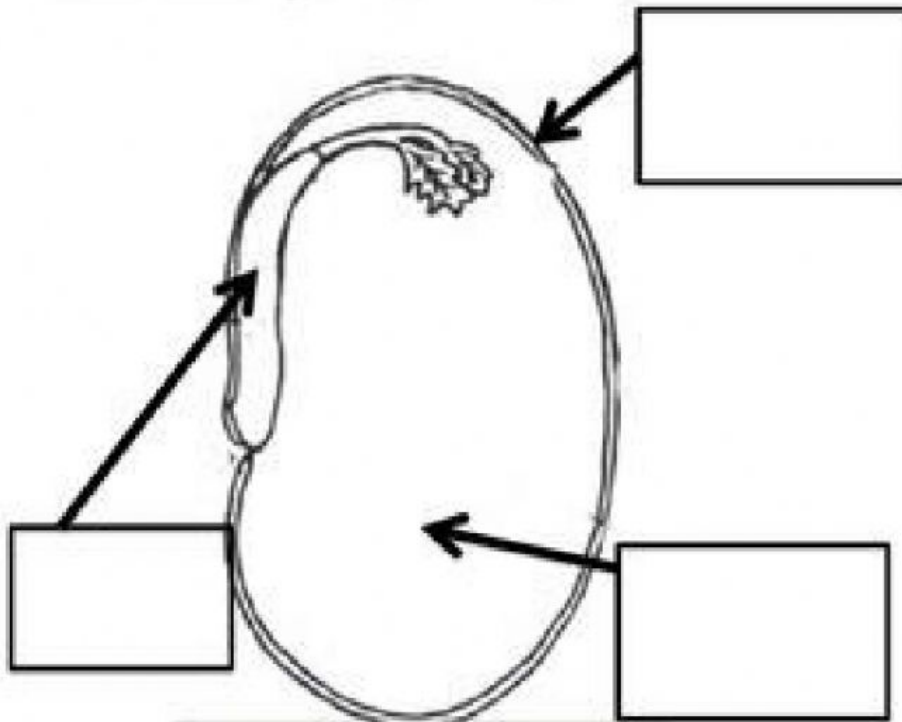


Monthly Test January 2022

Science

1. Use the words in the box below to label the parts of the bean.



seed coat

seed food

embryo

2. Study the picture. Sequence the steps in growing a seed by writing 1,2,3,4 and 5 in the box next to each sentence.



- The root grows longer and a tiny shoot begins to grow upward.
- First the seed soaks up water and the seed coat splits.
- A seed grows into a young seedling,
- A small white root that grows downwards is seen.
- The root get hairs and shoot will become darker and turn more upwards.