

CHUSKIT GOES TO SCHOOL

I. Match the things used by differently-abled people

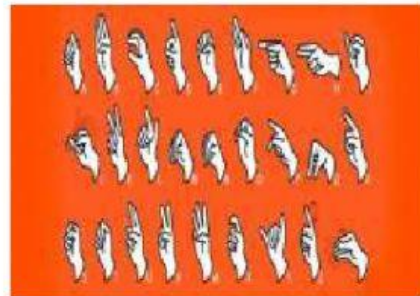


Visually impaired (blind)

Hearing impaired (deaf)

Speech impaired (dumb)

Physically challenged (lame)



II. Write True or False –

- a. Chuskit's house is very far from the school.
- b. She used to sit near the window and draw pictures.
- c. She was not happy to see the chair which had wheels.
- d. She wished she could also go to school with other children.
- e. A small bridge of cement was made across the river.
- f. Chuskit's parents gave hot tea and biscuits to all children.
.....

III. Choose the correct option and fill in the blanks-

- a. Chuskit was years old. (five , seven , ten)
- b. Since birth Chuskit could not use her (eyes, legs, hands)
- c. One group of children started to the road. (make, level, break)
- d. Children made a small across the river. (road, lane, bridge)

