

ANIMALS: CIRCULATION AND EXCRETION

In nutrition, animal cells need to absorb and eliminate Products. In the simplest animals, such as porifera and cnidarians, they exchange and energy and substances with the environment through the membrane. In more complex animals, substances are exchanged for an internal fluid thanks to the..... system.

CIRCULATORY SYSTEM

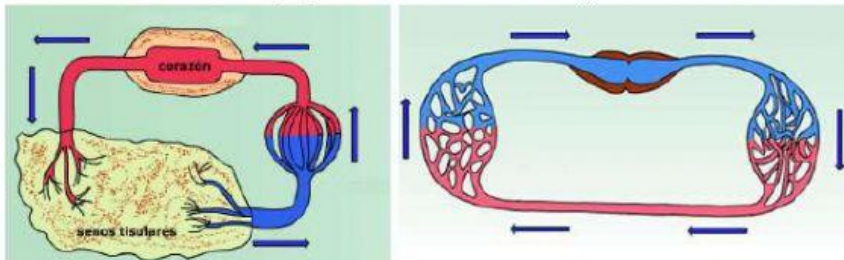
The circulatory system carries **oxygen**,, and hormones to **cells**, and removes products, like carbon

The circulatory system is made up of blood vessels that carry away from and towards the **heart**.

TYPES OF CIRCULATION:

..... **Circulatory Systems**. The fluid leaves the vessels and floods the tissues of the animal. It occurs in many invertebrates.

..... **Circulatory Systems**. The fluid always circulates inside the vessels.



EXCRETION

As a result of the activity of the cells, substances have to be eliminated by excretion.

The simplest animals remove waste products through the membrane of the cells.

The most complex excretory organs of animals are:

-of worms. Their excretory system consists of two tubules connected to a highly branched duct system.
-tubules. Excretion ducts in arthropods.
- In vertebrates.

