



**SUNNY PATH BILINGUAL SCHOOL**

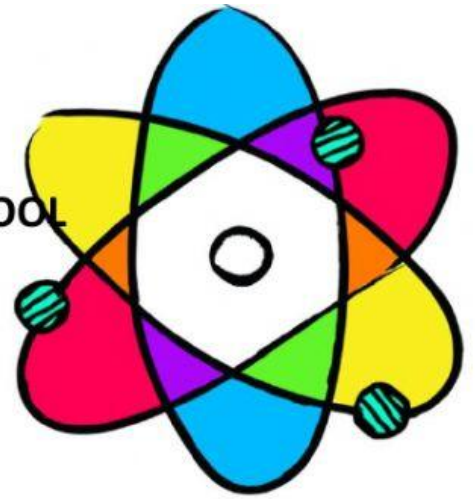
**SIXTH GRADE 1**

**II QUARTER**

**DATE:**

**STUDENT'S NAME:**

**SCIENCE EXAM**



**1. Select whether the statements correspond with men or women's risk factors. 5%**

Ovulation disorders causing infrequent ovulation. ( )

Alcohol use can cause erectile dysfunction. ( )

Tubal infertility. ( )

Endometriosis. ( )

Smoking leads to lower sperm count. ( )

Infection interfering with sperm production. ( )

Age reduces the quality and amount of eggs. ( )

Ovulations can be affected by obesity or being underweight. ( )

Stress and depression can interfere with hormone balance. ( )

Overexposure to chemicals like pesticides. ( )

**2. Select whether the following are true or false. 3%**

A reproductive limitation can be age. ( )

Drugs, alcohol, and chemicals negatively impact the amount of sperm a man produces. ( )

X-rays have no negative affect on the fertility of men. ( )

Chlamydia or gonorrhea can damage the fallopian tubes. ( )

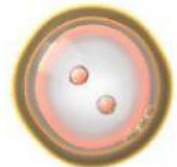
Tumors can cause infertility in men. ( )

Exercising can be a health risk factor for women. ( )

### 3. Choose true or false. Total 3%

- Breastfeeding can be painful.(   )
- A benefit of breastfeeding is that it is free.(   )
- Formula allows mother to share feeding duties with father.(   )
- Formula lacks antibodies.(   )
- A benefit of breastfeeding is that it aids in the emotional connection between mother and baby.(   )
- Breastfeeding makes mothers gain calories.(   )

### 4. Label the following objects which correspond to characteristics of pregnancy. Total 4%



\_\_\_\_\_

### 5. Select whether the following statements about laws and regulations of protected areas are true or false. Total 4%

- You can hunt in protected areas, but only if you pay. (   )
- If you do not follow the rules, it could put animals in danger.(   )
- No littering allowed in protected areas.(   )
- Gate times are there to show you when you may enter and exit.(   )
- You may feed monkeys in protected areas.(   )
- There is no fee to enter conservation areas.(   )
- You can make a fire in protected areas.(   )
- When you enter a protected area, you must state who you are and why you are there.(   )

**6. Choose the correct answer in each case. Write a**

**total 4%.**



•

Biodiversity can be defined as:

All the different species of organisms living on Earth.

All the same species of organisms living on Earth.

•

Why is it important to protect ecosystems?

It is not that important.

Humans cannot live without nature.

•

One reason for protecting ecosystems is:

They are aesthetically pleasing to look at.

They contribute to recycling of vital elements.

•

A danger to ecosystems is:

Deforestation

Planting trees

**7. Complete the following statements. Total 6%**

The men reproductive system is composed by:

\_\_\_\_\_

\_\_\_\_\_

\_\_\_\_\_.

The female reproductive system is composed by:

\_\_\_\_\_

\_\_\_\_\_

\_\_\_\_\_