



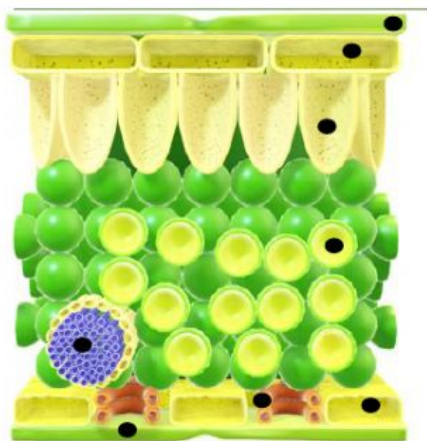
Teacher Jeffrey

# INTERNAL PARTS OF THE LEAF

## 5090 Combined Science

Name: ..... Class: .....

I. Instruction: Connect using a line the names to the corresponding internal part of the leaf in the diagram.



- Guard cell
- spongy mesophyll cell
- vascular bundle
- palisade mesophyll cell
- cuticle
- upper epidermis
- lower epidermis
- stoma

II. Instruction: Connect using a line the names to the description of the internal parts of the leaf.

Guard cell •

spongy mesophyll cell •

vascular bundle •

palisade mesophyll cell •

cuticle •

epidermis •

stoma •

- It contains the xylem and the phloem
- It is vertically elongated cell that contains more chloroplast.
- It is a waxy covering of the epidermis to prevent loss of water during transpiration.
- It is the pore that controls the exchange of gases.
- It is loosely packed cell located at the middle of the leaf.
- These are single layer of cells on upper and lower outermost part of the leaf.
- They are paired cells found in the lower epidermis with gaps formed for gas exchange.