

Unit 1 – Animals

Lesson 5: Arthropods

1. Fill in the Blanks:

An arthropod is invertebrate which is split into the following categories:

Insects: ___ legs, ___ segments , ___ antennae

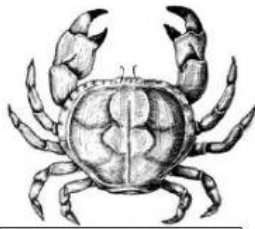
Arachnids: ___ legs, ___ segments

Crustaceans: ___ legs, ___ segments, ___ antennae

2. Select which group of arthropods the following animals belong to:



A spider is a(n)



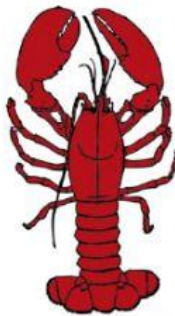
A crab is a(n)



A scorpion is a(n)



A mosquito is a(n)



A lobster is a(n)



A beetle is a(n)