

## PLANTS

a) How can we classify plants?

Types	Main groups	What they grow
1 _____	_____	_____
	_____	_____
2. _____	Examples _____ and _____	

b) What are the plants characteristics

- 1 \_\_\_\_\_
- 2 \_\_\_\_\_
- 3 \_\_\_\_\_
- 4 \_\_\_\_\_

c)

What do mosses have to anchor them to the ground?

\_\_\_\_\_

d)

How can plants divide according to their stems?

\_\_\_\_\_ and \_\_\_\_\_

e)

What does it mean when they say plants are autotroph organisms?

It means that \_\_\_\_\_

f)

Complete these sentences

The roots absorb water and minerals from the soil to make a special liquid called \_\_\_\_\_

\_\_\_\_\_

\_\_\_\_\_ takes place in the leaves, they use sunlight and carbon dioxide to convert raw sap into \_\_\_\_\_ which contains the nutrients for the plant

The union of pollen with an ovule is called \_\_\_\_\_

The movement of pollen grains from the anther to the stigma is called \_\_\_\_\_

G)

What is the plant's female reproductive organ?

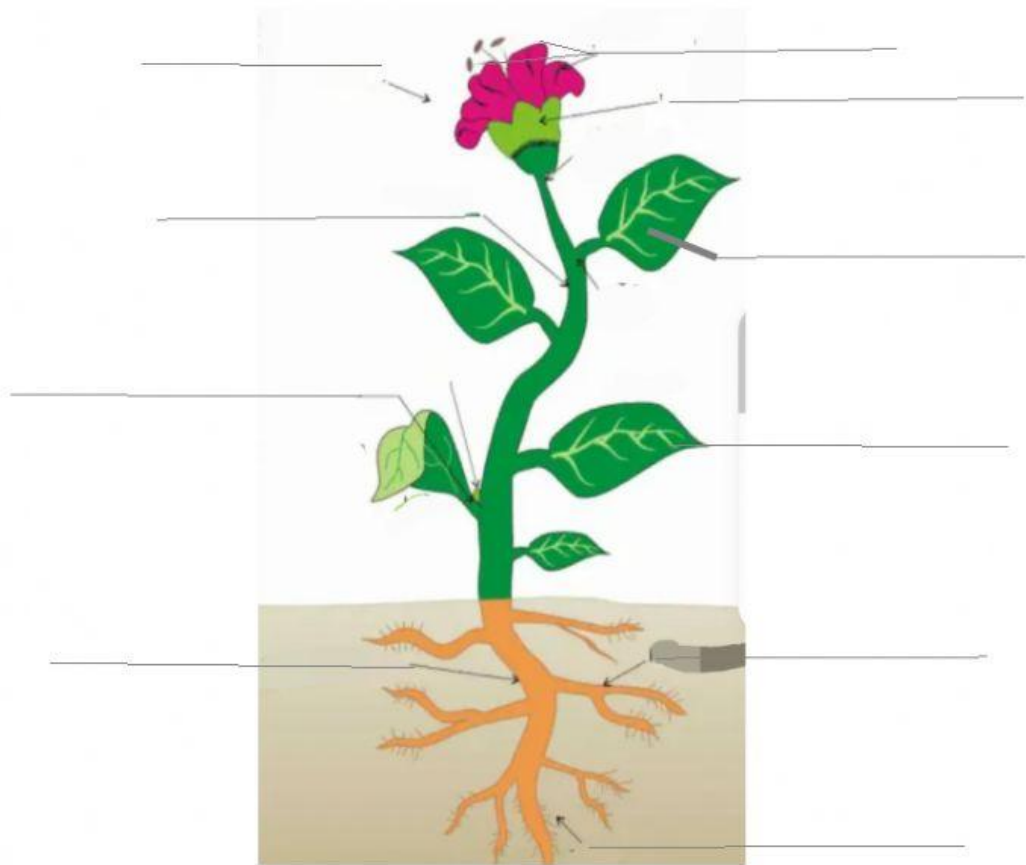
\_\_\_\_\_

And the male's one?

\_\_\_\_\_

\_\_\_\_\_

H) indicate the plant's parts



What are these parts called?

