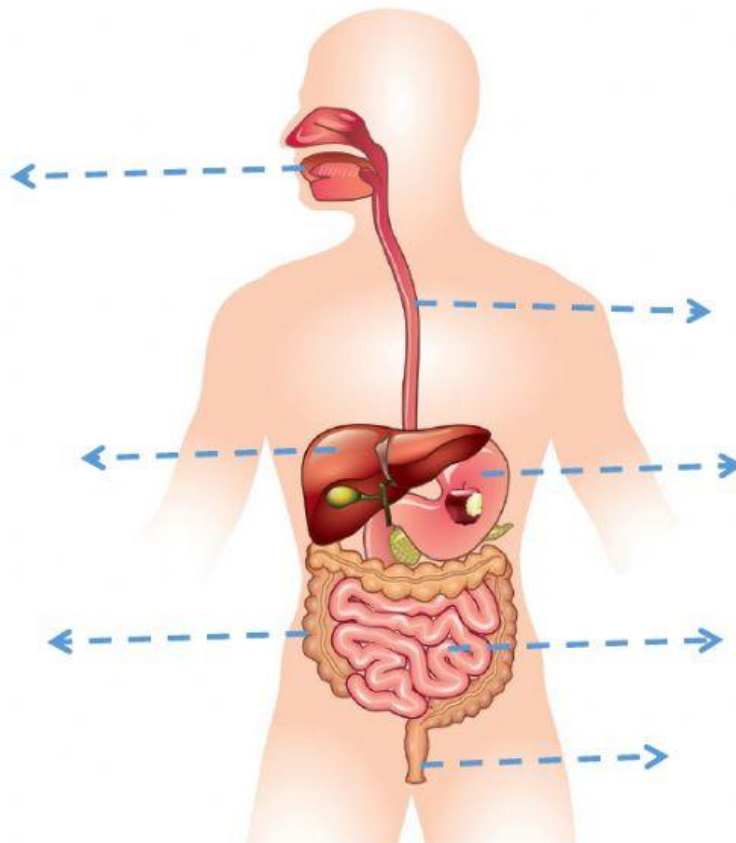


1. Label the organs of the digestive system.

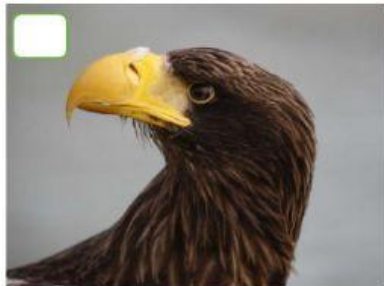
stomach   liver   anus   mouth   small intestine  
large intestine   esophagus



2. Read the text, and complete with a word from the previous activity.

Digestion begins in the \_\_\_\_\_, the bolus travels down the \_\_\_\_\_. Once in the \_\_\_\_\_ food mixes with gastric juices. The \_\_\_\_\_ absorbs nutrients whereas the large intestine absorbs water from fecal matter. Finally, fecal matter is expelled through the \_\_\_\_\_.

3. Write A if the organism is autotroph, or H if it is heterotroph.



4. Read and answer the following questions.

a) What was the name of the Aztecs' city?

Tlalocan

Tenochtitlán

Cholula

b) Where was Tenochtitlan founded?

Lake  
Texcoco

Xochimilco

Teotihuacan

c) Aztecs were polytheists, which means they

Worshipped  
a single god

Worshipped  
many gods



d) Aztec god of war

Tlaloc

Huitzilopochtli

Coatlucue

e) He was the Aztec god of rain and lightning

Huitzilopochtli

Tlaloc

Quetzalcoatl

f) She was the mother of all gods

Quetzalcoatl

Coatlucue

Huitzilopochtli

g) Aztec god of the wind, his name means "feathered serpent".

Quetzalcoatl

Huitzilopochtli

Tlaloc

## 5. Write True or False

A triangle is a 2-dimensional figure. \_\_\_\_\_

3-dimensional figures have length, width, and depth. \_\_\_\_\_

A rectangle is a 3-dimensional figure. \_\_\_\_\_

## 6. Match the shapes with their names.

cuboid

sphere

cylinder

cube

cone

