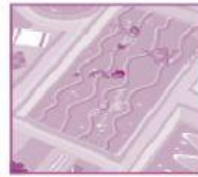


1

Look and put on the stickers. Write.



cinema



2

Read and match. Write the correct letter in the box. Ieraksti pareizo burtu lodziņā.



1 Is there a cinema?

2 Are there any museums?

3 Are there any shops?

4 Is there a hospital?

a No, there aren't.

b Yes, there is.

c No, there isn't.

d Yes, there are.

3

Look at the picture in activity 2. Complete the questions and answers.

1 Is there a swimming pool?

No, there isn't.

2 Are there any restaurants?

Yes, .

3 Is there a school?

.

4 Are there any parks?

.

5 Is there a toy shop?

Yes, .

6 any lorries?

No, .

7 any cars?

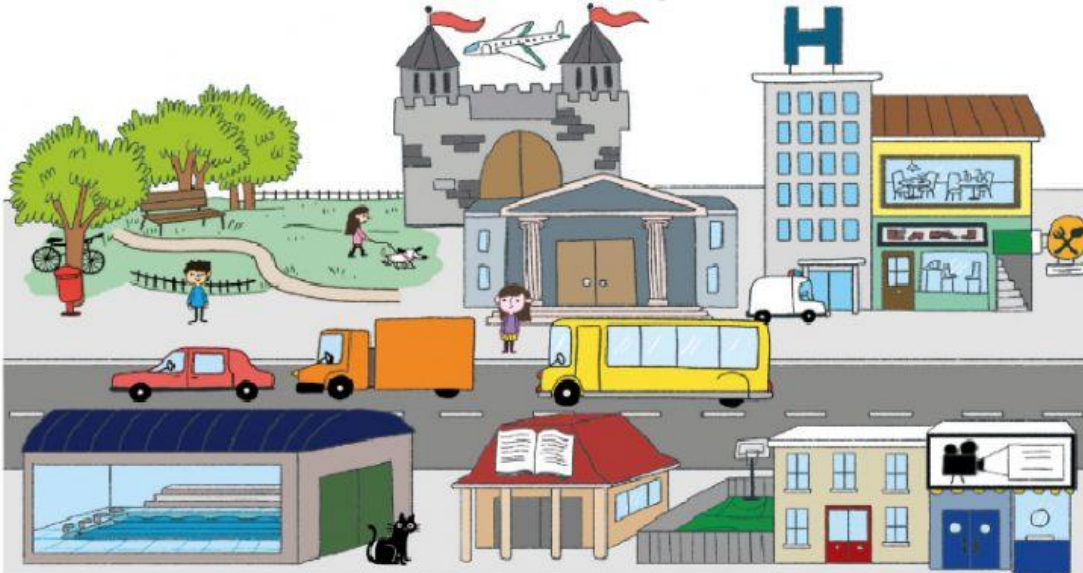
.

8 a station?

.

Skaties uz bildi 2.uzd
Atzīmējiet jautājumus un
atbildes.

4 Read and write the correct answer. Lasi un raksti pareizo atbildi.



- 1 The school is the cinema.
- 2 The library is the swimming pool and the school.
- 3 The museum is the library.
- 4 The restaurant is the shoe shop.
- 5 The castle is the museum.

5 Look at the picture in activity 4 and complete. Skaties uz bildi 4.uz. un pabeidz teikumus.

opposite in front of ~~between~~ next to behind above

- 1 Where's the lorry? It's between the car and the bus.
- 2 Where's the bike? It's the tree.
- 3 Where's the girl? She's the museum.
- 4 Where's the cat? It's the swimming pool.
- 5 Where's the plane? It's the castle.
- 6 Where's the boy? He's the swimming pool.