

QUIMESTRAL EVALUATION INSTRUMENT

1. INFORMATIVE DATA					
Type:	Certification	Area/Axe:	EFL	Level:	Basic
Class:	Summative	Subject	Science	Sub-level:	Elemental
Quimestre:	1 st	Teacher:	Cristhian Villota	Grade:	3th
School year:	2021-2022	# Unit:	1-2-3	Section:	A
Student:				Date:	

2. INSTRUCTIONS
1. Read carefully the raised questions. 2. If you have difficulty in answering any questions, move on to the next one, DO NOT LOSE TIME. 3. Use only a blue ink pen to perform the evaluation. 4. Avoid amendments (patches, corrections, blots) because the answer will be VOIDED. 5. Demonstrate academic honesty during the performance of the evaluation and avoid disciplinary educational actions Art. 224 (Type II) / Art. 330 (5).

MOTIVATING PHRASE: "The secret of getting ahead is getting started." – Mark Twain	
3. EVALUATION COMPONENTS	
Skills and performance criteria	Communication and cultural awareness, reading, writing.
Performance Indicator	<ul style="list-style-type: none"> - Students can recognize and write main organs of the body, animals, life cycles and animals - Students can create chains of knowledge about human body and organs - Students can identify the correct use of VOCABULARY OF THE 1st QUIMESTRE
Evaluative activity	- Read and solve the following activities

Vertebrate Animals: are the group which have bones inside of their body.

1. Select the correct option: Which is a dangerous vertebrate animal?



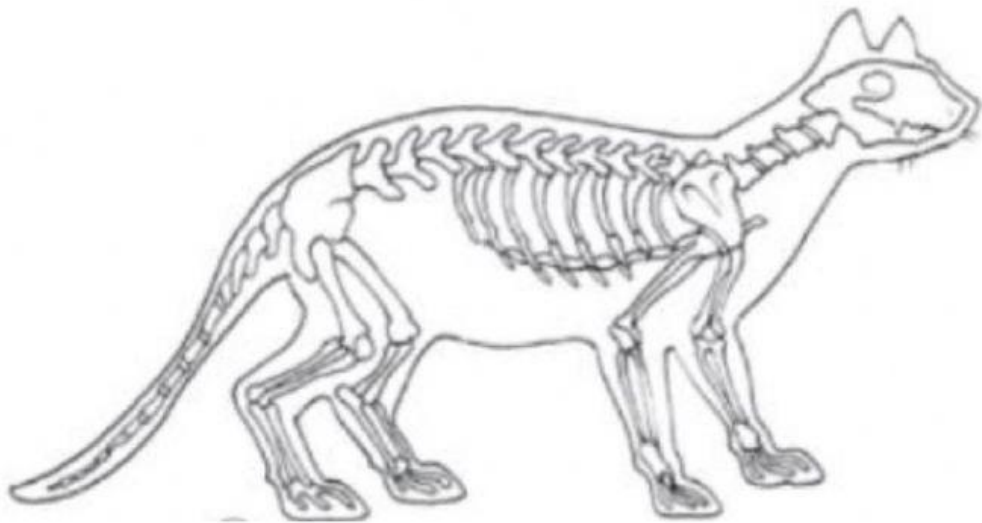
2. Underline the correct sentence

-MAMMALS ARE THE GROUP WHICH ARE BORN FROM A MOTHER

-MAMMASL ARE THE GROUP WHICH ARE BORN FROM EGGS

3. Color the parts of the body in the next animal.

Yellow ----- head blue----- legs red-----body



The life cycles are the series of changes in the life of an organism including reproduction.

4. Choose the correct order of the life cycle.

-EGG, CHICKEN, CHICK, ADULT CHICKEN

-EGG, CHICK, YOUNG CHICKEN, ADULT CHICKEN

-EGG, ADULT CHICKEN, YOUNG CHICKEN, CHICK



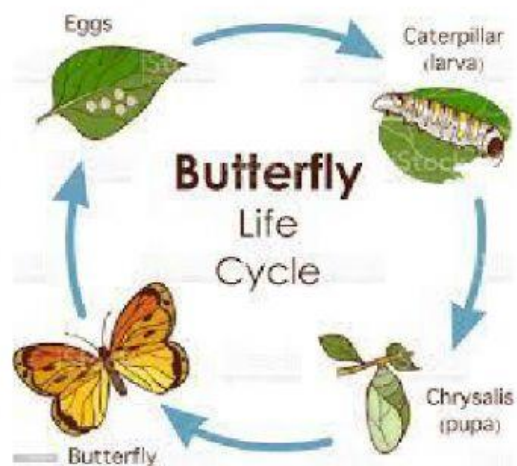
An invertebrate is a cold-blooded animal with no backbone. Invertebrates can live on land—like insects, spiders, and worms—or in water.

5. Choose the best answer: What is the beginning of the life cycle?

-Dead

-Reproduce

-Born



6. Pick out the best answer: An insect has _____ legs.

- eight (8)
- seven (7)
- six (6)



7. Select the correct option: This is an invertebrate and it has 8 legs, so what is it?

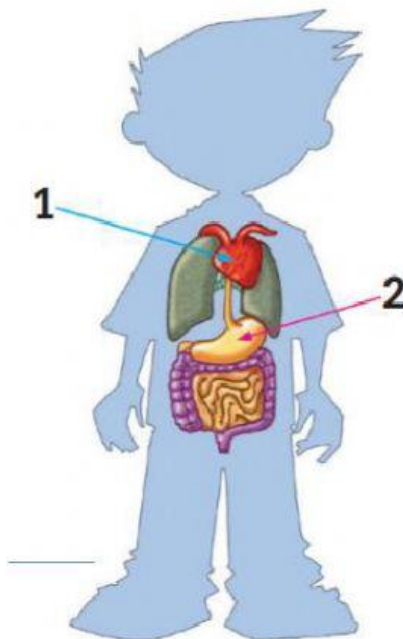
- insect.
- arachnids.
- mammal.



Vocabulary: It is a set of familiar words usually developed with age, serves as a useful and fundamental tool for communication and acquiring knowledge.

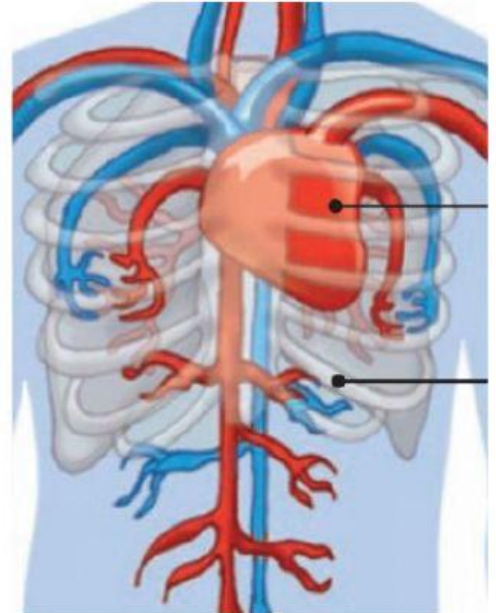
8. Select the correct answer: Which organs are in the picture?

- A. Stomach and intestines.
- B. Heart and stomach.
- C. Bones and muscles.



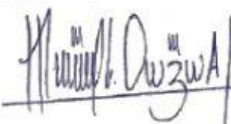



9. Pick out the right answer: Which food is good for the heart?

- A. Meat and chocolate.
- B. Fruit and vegetables.
- C. Biscuits and cream.



10. Pick out the correct option: Which bones do protect the heart?

- A. The cranium.
- B. The leg bones.
- C. The ribs.

4. VALIDATION		
DESIGNED BY:	REVISED BY:	APPROVED BY:
TEACHER: Tgnlo. Cristhian Villota	ENGLISH COORDINATOR: LIC. Manuel Orozco Arevalo	PRINCIPAL: M.Sc. Yomara Rosales
DATE: 2022/01/10	DATE: 2022/01/11	DATE: 2022/01/12
SIGNATURE: 	SIGNATURE:   ENGLISH COORDINATION	SIGNATURE:  

PARENT/L. REPRESENTANT:	STUDENT'S SIGNATURE:
DATE:	
SIGNATURE:	

