

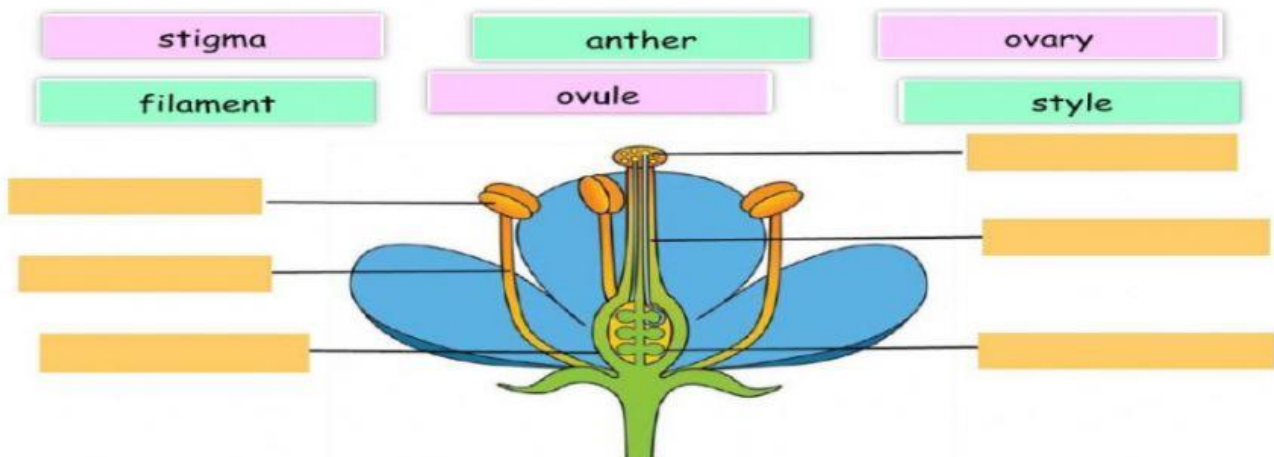


SCHOOL YEAR:	2021-2022	TERM N°:	1	SUBJECT:	Science	
Teacher:	Vicente Suárez				GRADE / COURSE	6th EGB
DATE:					SCORE:	
STUDENT:					/16 =	/10

GENERAL INSTRUCTIONS:

Read the instructions carefully.
Use a black or blue pen. Answers in pencil will not be taken into account.
No corrections, cross-outs or whiteout will be allowed.
You are not allowed to use any electronic device or dictionary during the test.

Part 1: Labelling. Label the parts of the flower. 6 marks



Part 2: Sentence organization. Look at these words and put them in the correct order. 5 marks

a fly. It has This is two compound eyes.



It has This is a pair of antenna a bee.



a yellow abdomen a grasshopper. It has This is

a caterpillar. many legs. This is It has



a mosquito. It has This is proboscis.





Part 3: Matching. Match the parts of the female reproductive system to their definitions. 5marks

Ovaries

Uterus

Fallopian tubes

Vagina

Vulva

a pair of tubes running from the ovary to the uterus, through which an egg cell travels.

the outer folds that surround the openings of the vagina and the opening from the bladder called the urethra.

two organs on either side of the lower abdomen that release an egg cell monthly.

an organ, also called the womb, where the fertilized egg cell implants and grows into the unborn baby.

a muscular tube that receives the penis during sex, through which sperm travel on their way to fertilize the egg.

IF YOU HAVE COMPLETED YOUR EXAM, CHECK IT CAREFULLY AND HAND IT IN