

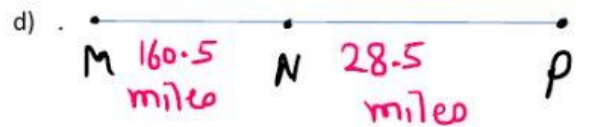
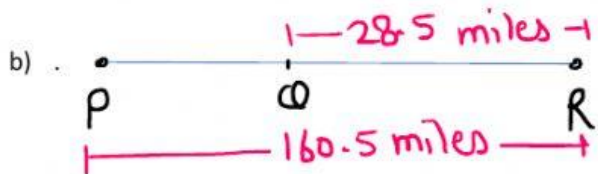
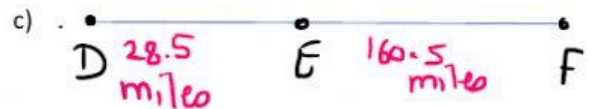
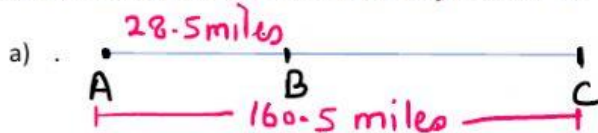
9 Advance Mathematics

Lesson 10.3 Example - 4

Name in English

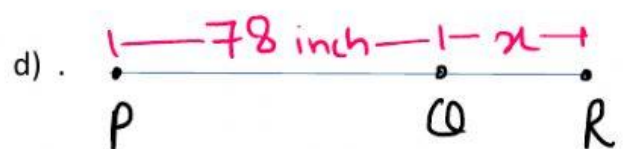
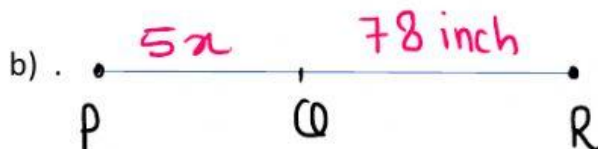
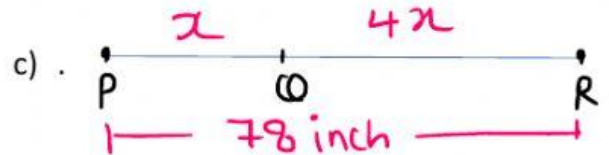
Instructions: - Please select the correct rough diagram and then select the correct answer.

RAILROADS A straight railroad track is being built to connect two cities. The measured distance of the track between the two cities is 160.5 miles. A mail stop is 28.5 miles from the first city. How far is the mail stop from the second city?



The mail stop is Miles away from the second city.

CARPENTRY A carpenter has a piece of wood that is 78 inches long. He wants to cut it so that one piece is five times as long as the other piece. What are the lengths of the two pieces?



Length of small piece is inches and length of bigger piece is inches

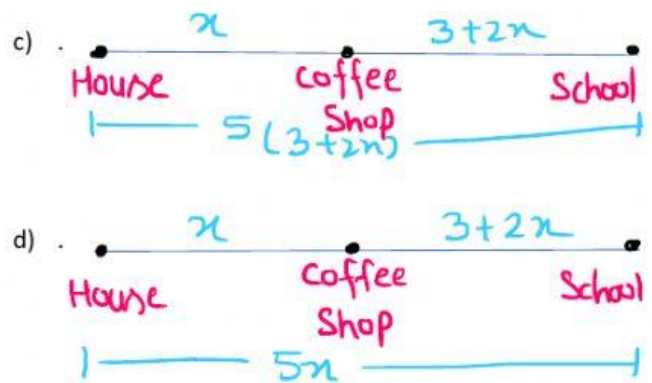
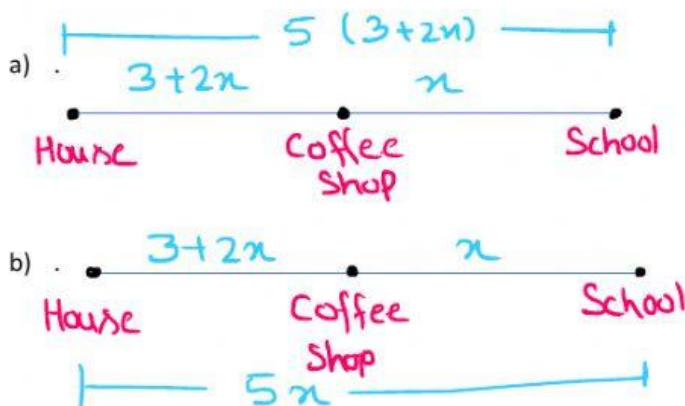
WALKING Marshall lives 2300 yards from school and 1500 yards from the pharmacy. The school, pharmacy, and his home are all collinear, as shown in the figure.



What is the distance from the pharmacy to the school?

yards

COFFEE SHOP Chenoa wants to stop for coffee on her way to school. The distance from Chenoa's house to the coffee shop is 3 miles more than twice the distance from the coffee shop to Chenoa's school. The total distance from Chenoa's house to her school is 5 times the distance from the coffee shop to her school.



What is the value of x

What is the distance from Chenoa's house to the coffee shop? Write your answer as a decimal, if necessary.

