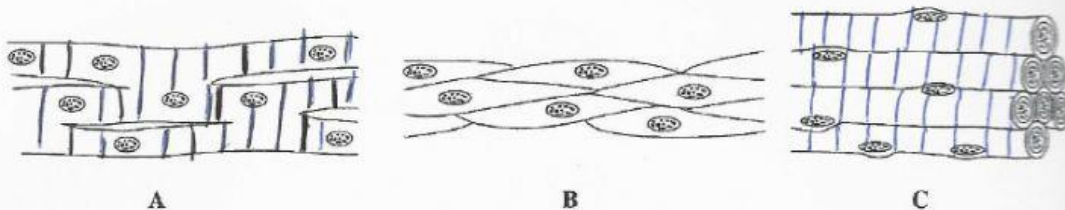


2. The diagrams show the three types of muscle tissue found in the human body.



- (a) Complete the table by filling in the blanks to show the name of each muscle, type of muscle (voluntary or involuntary) and examples of organs they are found in.

	Name of muscle	Type of muscle	Organ found in
A			
B			

[6]

- (b) Muscle C is attached to bones of the skeleton.

- (i) Name the type of tissue found at the end of muscle C.

_____ [1]

- (ii) The muscles at C allow you to bend and straighten your arm. What must happen to these muscles to allow these actions to occur?

_____ [2]

- (c) How many muscles are found in the human body?

_____ [1]

TOTAL MARKS [10]