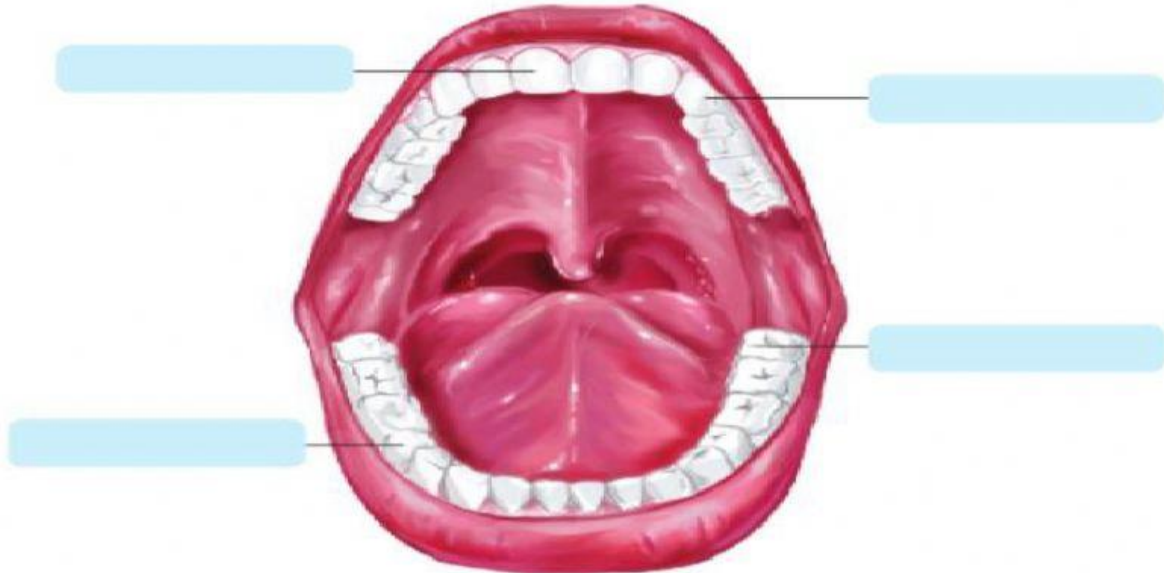


Activity 37

Your teeth

1 Use the words in the box to label the different types of teeth.

molar premolar incisor canine



2. What is the main function of the teeth?

3. Adult people will have how many permanent teeth?

4. Match the function with the correct type of teeth.

Function	Type of teeth
These teeth are located near the canine. It is used to grind and chew food.	
These teeth help to bite and tear food.	
These teeth are at the back of our mouth. It helps us to grind and chew our food.	
These teeth help us to bite and cut our food.	