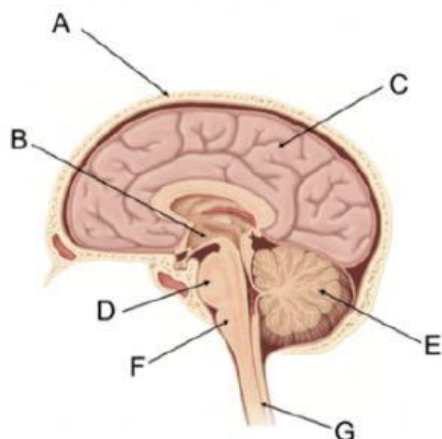


1. Using the image, identify the different structures of the brain and their functions.

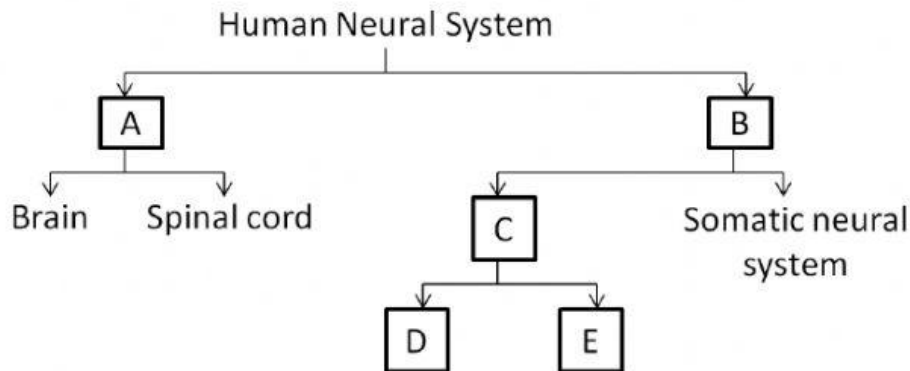


	Brain Structure
A	
B	
C	
D	
E	
F	
G	

2. Use a ✓ to identify if the statements are related to the central nervous system or the peripheral nervous system.

Statement	Central Nervous System	Peripheral Nervous System
It consists of interneurons only		
It consists of sensory and motor neurons		
It consists of the brain and spinal cord		
It relays messages, processes information and analyzes responses		
It includes the somatic and autonomic nervous system		

3. Which of the following best describe(s) the function of the autonomic nervous system?
- Processes information
 - Responsible for generating voluntary responses
 - Helps the body deal with emergencies
- I only
 - II only
 - III only
 - I, II and III
4. Which of the following best describe(s) the function of the somatic nervous system?
- Process information
 - Responsible for generating voluntary responses
 - Helps the body deal with emergencies
- I only
 - II only
 - III only
 - I, II and III
5. Identify the parts and functions of the nervous system in the flow chart below.



	System
A	
B	
C	
	Somatic Nervous System
D	
E	

6. Use a ✓ to identify if the activities are related to the somatic nervous system or the autonomic nervous system.

Activity	Somatic Nervous System	Autonomic Nervous System
Reflexes		
Digestion		
Breathing rate		
Climbing the stairs		

7. Use a ✓ to identify if the statements are related to the sympathetic nervous system or the parasympathetic nervous system.

Statement	Sympathetic Nervous System	Parasympathetic Nervous System
Increase in heart rate		
Increase in digestion rate		
Decrease in breathing rate		
Increase in breathing rate		
Increase in saliva production		
Decrease in digestion rate		
Dilation of the pupil in the eyes		