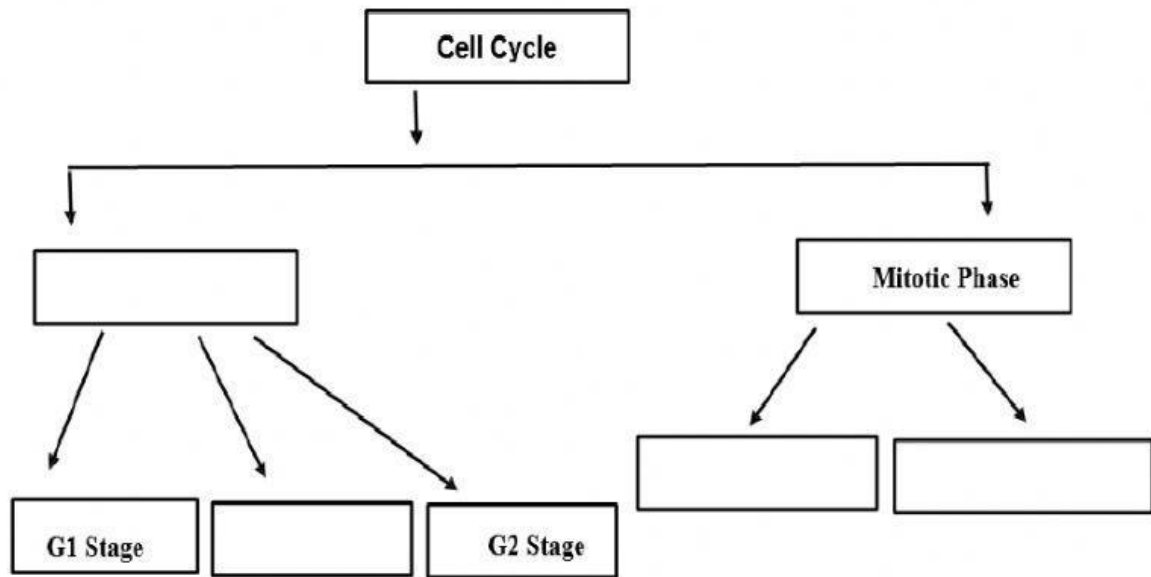


**\*Complete the concept map of cell cycle.**  
**(Mitosis-Cytokinesis-S stage- Interphase)**



**Compare the differences between plant and animal cell.**

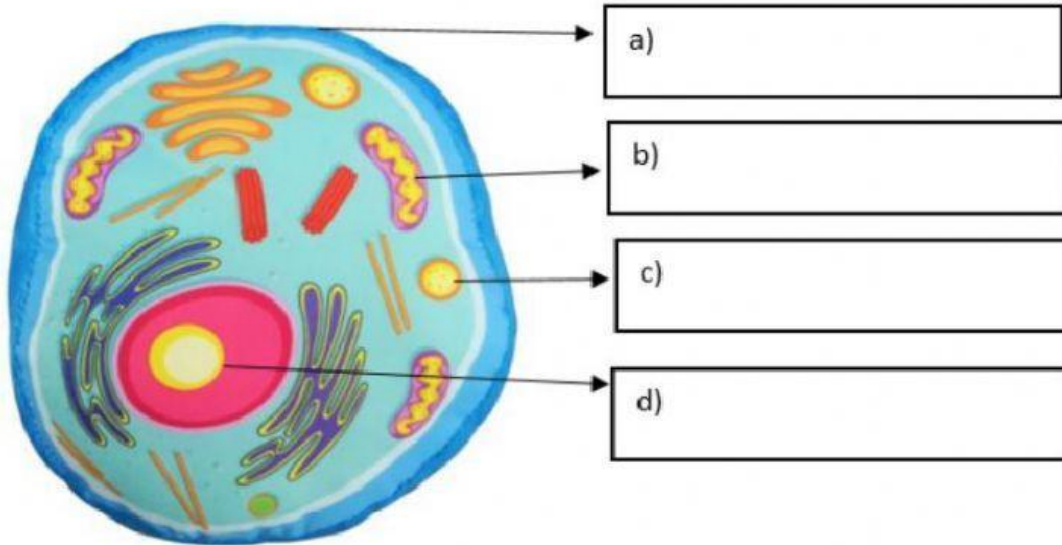
Plant cell	Animal cell

**Compare the differences between DNA and RNA.**

DNA	RNA

Label the organelles of cell.

Nucleus-vacuole-cell membrane-mitochondria



\*Circle the correct answer.

1) Which cell organelle is large in plant cell but small or absent in animal cell?

- a) Vacuole
- b) Mitochondria
- c) Nucleus

2) A molecule which is made by sugar, nitrogen bases and phosphate group is called

- a) Nucleotide
- b) Protein
- c) Ribosome

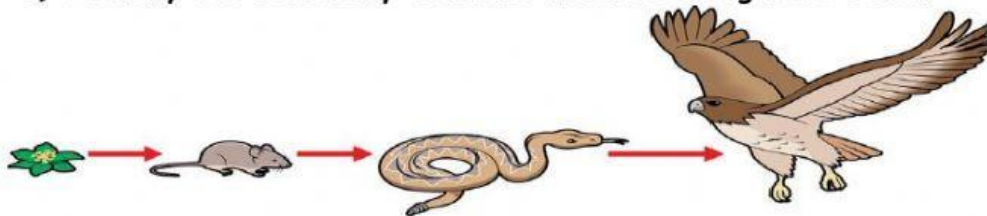
3) What is the similarity between prokaryotic cell and eukaryotic cell?

- a) Both contain DNA
- b) Both have nucleus
- c) Both have mitochondria

4) The process which make another copy of DNA and copies the genetic information of a cell is called \_\_\_\_\_

- a) Transcription
- b) Translation
- c) DNA replication

5) Identify the secondary consumer from following food chain.



- a) Plant
- b) Snake
- c) eagle

6) Which type of aquatic ecosystem is a mix of fresh and salt water?

- a) Pond
- b) Estuary
- c) River

**Complete it**

1) A biome contains large populations of grazing herbivores, grass is a dominant plant, few species of birds, and deep, rich soil is \_\_\_\_\_

- 2) The pigment which absorb light for photosynthesis is called \_\_\_\_\_
- 3) The small opening that exchange gases in plant during photosynthesis is \_\_\_\_\_
- 4) The cell organelle that link amino acids together to form proteins is called \_\_\_\_\_