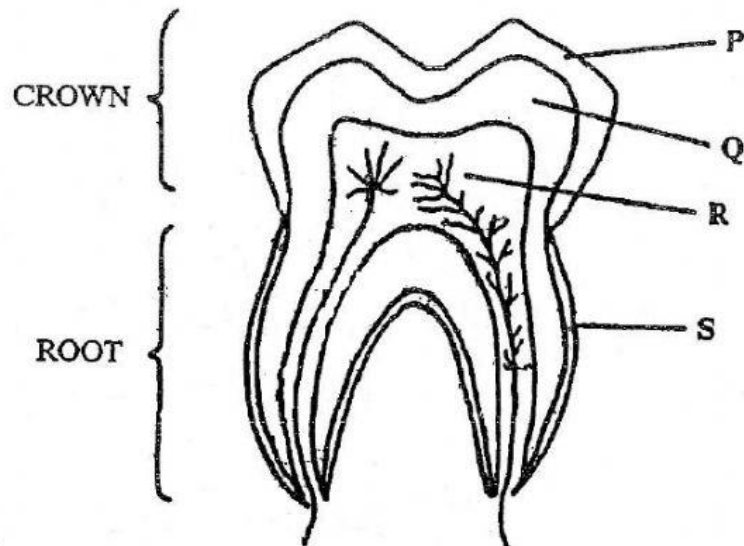


## STRUCTURE OF THE TOOTH

The diagram represents one of the four kinds of permanent teeth found in the human mouth.



1. What kind of tooth is shown in the diagram? \_\_\_\_\_ [1]
2. Provide the names of the structures labeled with the letters P, Q, R and S, in the spaces in the table below. [4]

<b>P</b>	
<b>Q</b>	
<b>R</b>	
<b>S</b>	

3. Give the correct name for the following parts of a tooth. [3]
  - (i) The living tissue in the center of a tooth. \_\_\_\_\_
  - (ii) The material that covers and surrounds the crown of a tooth.  
\_\_\_\_\_
  - (iii) The structure in a tooth that makes it sensitive to pain.  
\_\_\_\_\_