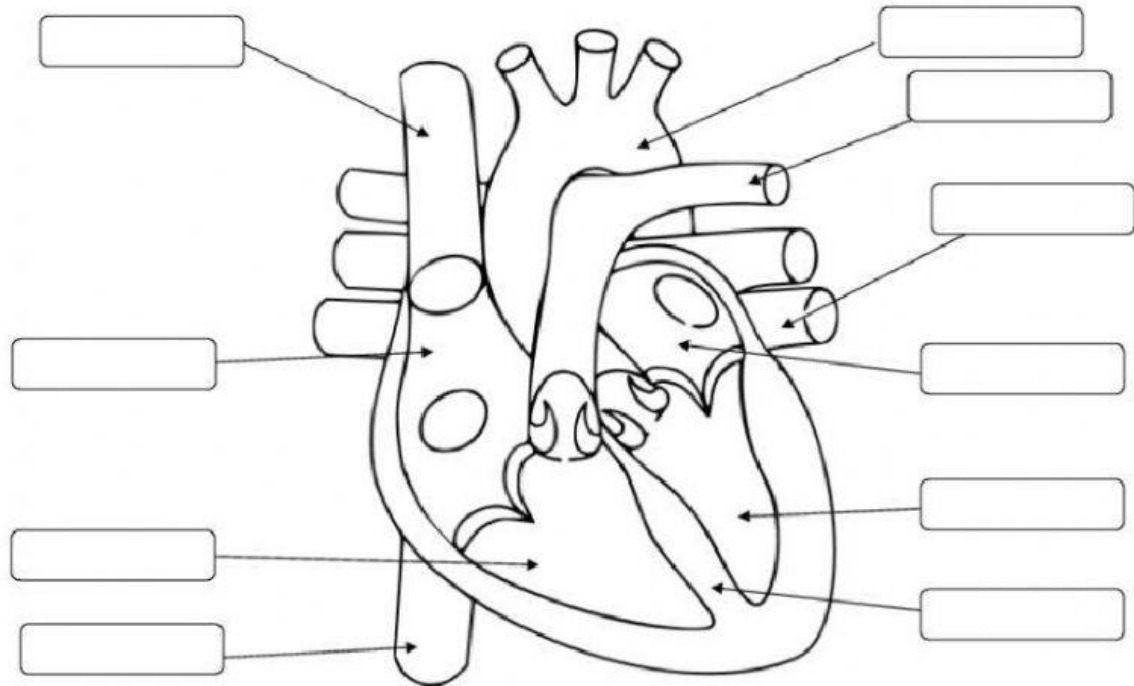


Name: \_\_\_\_\_ Date: \_\_\_\_\_

Label the identified part of the heart. Color the parts with oxygenated blood in red and deoxygenated blood in purple or deep red. When done complete the chart below with the function and oxygen level of each heart part.



<http://commons.wikimedia.org/wiki/File:Heart.svg>

	Oxygenated/ Deoxygenated Blood	Function
Vena cava		
Aorta		
Pulmonary Artery		
Pulmonary Vein		
Right Atrium		
Right Ventricle		
Left Atrium		

© 2013 The Tech Savvy Science Teacher <http://techsavvyscience.blogspot.com>