

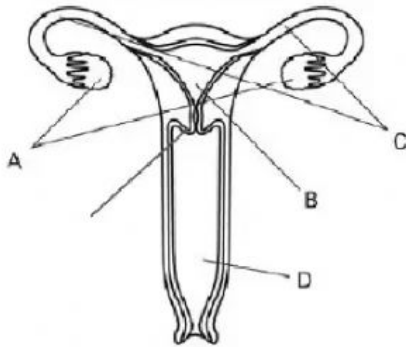
## The Male and Female Interactive Worksheet

**Directions:** Label the diagram below

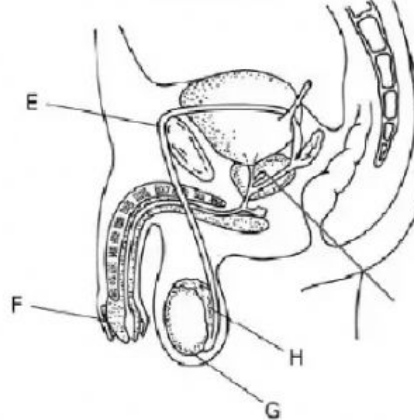
**Word Bank**

cervix ovary prostate uterus epididymis fallopian tubes testes vagina  
urethra opening vas deferens

Female Reproductive Organs



Male Reproductive Organs



.....

- |                                       |                                       |
|---------------------------------------|---------------------------------------|
| <p>a.<br/>b.<br/>c.<br/>d.<br/>e.</p> | <p>f.<br/>g.<br/>h.<br/>i.<br/>j.</p> |
|---------------------------------------|---------------------------------------|

1. List the male parts, in order, for which sperm and semen are produced and released.

Word Bank: urethra opening testes prostate epididymis vas deferens

- a.  
b.  
c.  
d.  
e.

2. List the female parts, in order, for which an egg/ovum is created and released.

Word Bank: vagina ovary cervix fallopian tube uterus

- a.  
b.  
c.  
d.  
e.