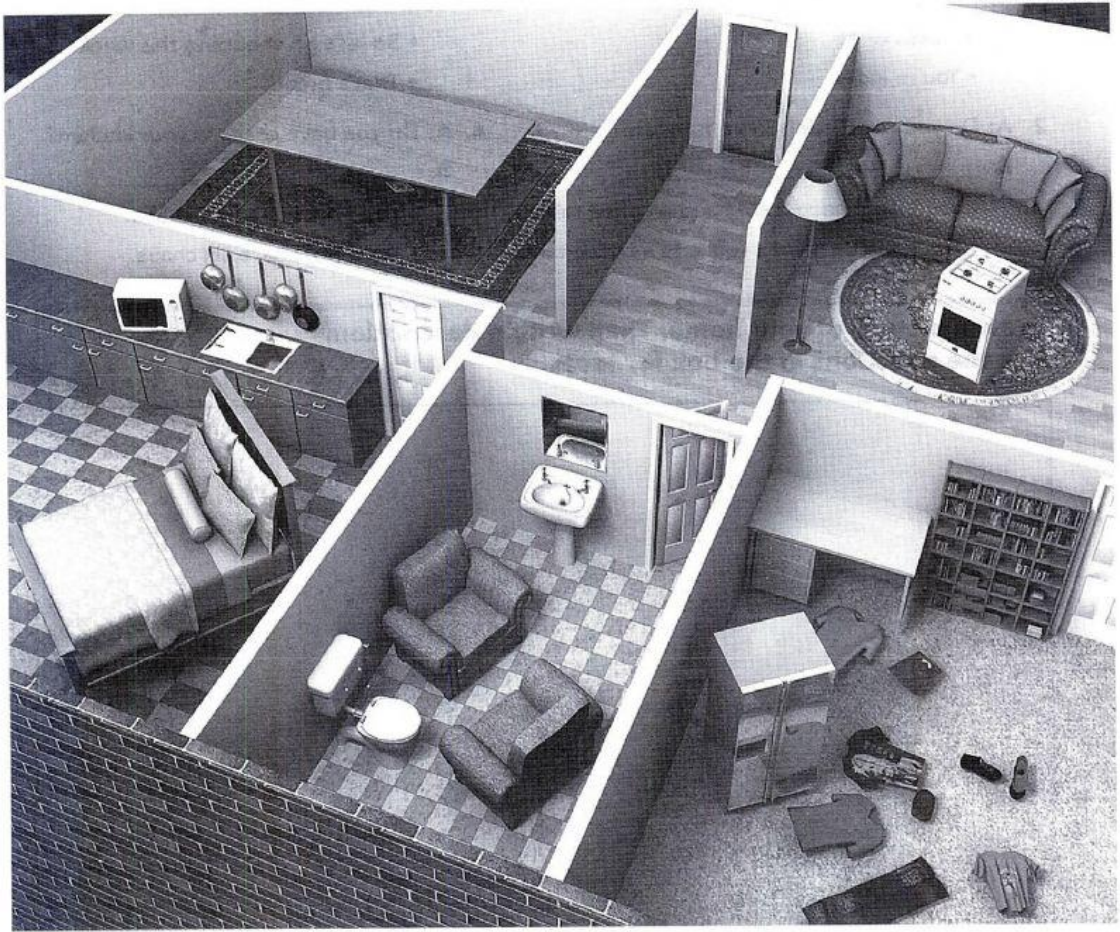


8

What's wrong with this house?

A Write sentences about the house. Use *there* and the words in parentheses.



1. There is no stove in the kitchen / There isn't a stove in the kitchen. (stove / kitchen)
2. _____ (chairs / dining room)
3. _____ (stove / living room)
4. _____ (refrigerator / bedroom)
5. _____ (bed / bedroom)
6. _____ (armchairs / bathroom)
7. _____ (bed / kitchen)
8. _____ (bookcases / living room)

B Write four more sentences about the house.

1. _____
2. _____
3. _____
4. _____