

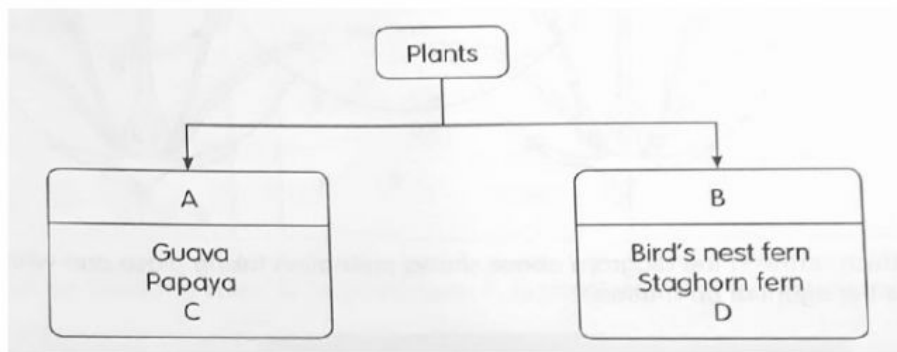


Name: ( )	Class:	Date:
Parent's Signature:	Results: /100	%

### Section A (80pts)

#### Multiple-choice Questions (16 x 5 marks)

1. Study the classification chart below.



Which of the following could A, B, C and D represent?

	A	B	C	D
1)	Reproduce from spores	Reproduce from seeds	Chiku	Durian
2)	Reproduce from spores	Reproduce from seeds	Pong Pong	Mould
3)	Reproduce from seeds	Reproduce from spores	Strawbery	Mango
4)	Reproduce from seeds	Reproduce from spores	Chilli	Moss

( )

2. What are the two important processes that enable the water cycle to occur?

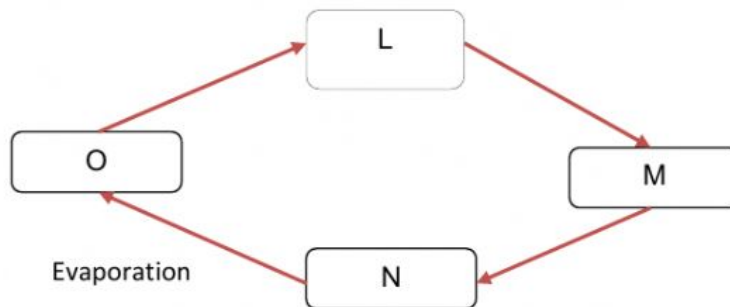
- 1) Melting and freezing
- 2) Boiling and evaporation
- 3) Condensation and boiling
- 4) Condensation and evaporation

( )





3. The water cycle is shown below.



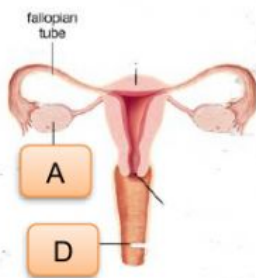
Which of the following is correct?

	L	M	N	O
1)	Rain	Cloud	Water	Water vapour
2)	Rain	Cloud	Water vapour	Water
3)	Cloud	Snow	Water	Water vapour
4)	Cloud	Snow	Water vapour	Water

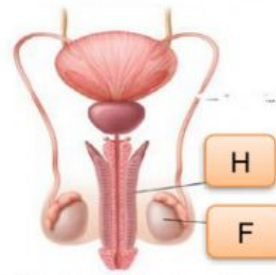
( )

4. The diagram below shows the human reproductive systems.

Female reproductive organs



Male reproductive organs



Part \_\_\_\_\_ produces female reproductive cells while part \_\_\_\_\_ produces male reproductive cells.

- |         |         |
|---------|---------|
| 1) A, H | 2) A, F |
| 3) D, H | 4) D, F |

( )

5. How does water help the human digestive system to carry out its functions?

- A Water in saliva softens the food.
- B Digestive juices need water to work.
- C Water allows solid waste to be passed out of the body easily.
- D Water helps to dissolve digested food so that they can be absorbed into the bloodstream.

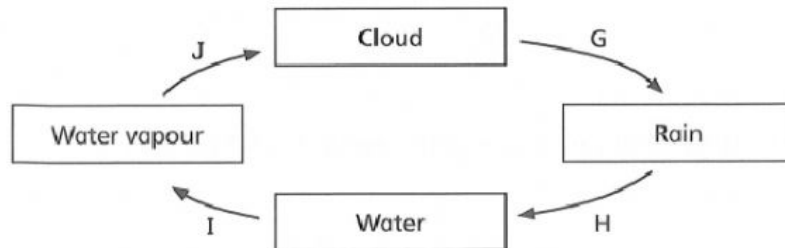
- |                  |                     |
|------------------|---------------------|
| (1) A and C only | (3) A, B and C only |
| (2) B and D only | (4) A, B, C and D   |

( )





Study the following diagram and answer question 6 to 8.



6. Which arrow represents condensation?

- 1) G
- 2) H
- 3) I
- 4) J

( )

7. Which arrow represents evaporation?

- 1) G
- 2) H
- 3) I
- 4) J

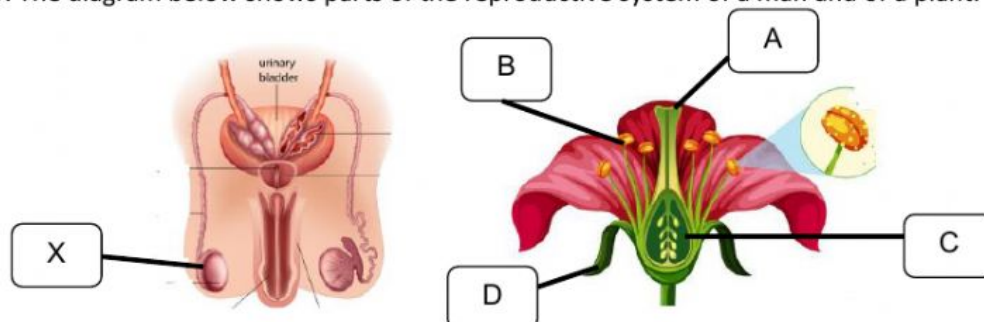
( )

8. Which of the following correctly shows the states of cloud, rain, water and water vapour?

	Cloud	Rain	Water	Water vapour
(1)	Liquid state	Gaseous state	Gaseous state	Liquid state
(2)	Liquid state	Liquid state	Liquid state	Gaseous state
(3)	Gaseous state	Liquid state	Liquid state	Liquid state
(4)	Gaseous state	Liquid state	Liquid state	Gaseous state

( )

9. The diagram below shows parts of the reproductive system of a man and of a plant.



Based on the diagram above, which part of the plant has a **similar function** as X?



- 1) A
- 2) B
- 3) C
- 4) D

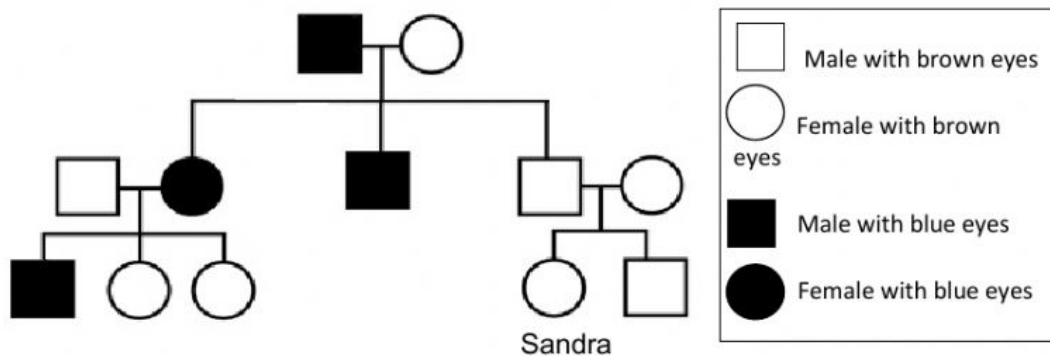
( )

10. Which describe a change that takes place when a chocolate bar melt?

- 1) A solid becomes a gas.
- 2) A liquid becomes a gas.
- 3) A solid becomes a liquid.
- 4) A liquid becomes a solid.

( )

Study Sandra's family tree below and answer question 11,12,13.



11. How many people in Sandra's family are males?

- 1) 7
- 2) 6
- 3) 5
- 4) 4

( )

12. How many people in Sandra's family have brown eyes?

- 1) 5
- 2) 6
- 3) 7
- 4) 8

( )

13. What is the eye colour of Sandra's parents?

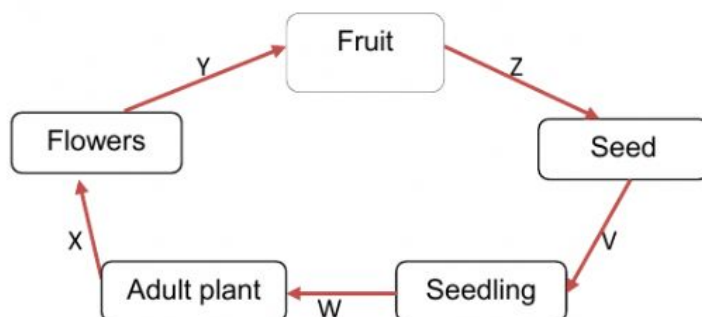
	Father	Mother
1)	Blue	Blue
2)	Blue	Brown
3)	Brown	Brown
4)	Brown	Blue

( )





14. The diagram below shows the development of a flowering plant.



When do the following processes take place?

	Pollination	Fertilisation	Germination
1)	X	Y	V
2)	X	Y	Z
3)	Y	Y	V
4)	Y	Z	V

( )

13. Which of the following statements about non-flowering plants is **incorrect**?

- 1) Ferns are non-flowering plants.
- 2) Non-flowering plants do not bear fruits.
- 3) All non-flowering plants reproduce through seeds.
- 4) Non-flowering plants are able to make their own food.

( )

14. What conditions does a seed need in order to germinate?

- A Air
- B Light
- C Water
- D Warmth

1) B and D only

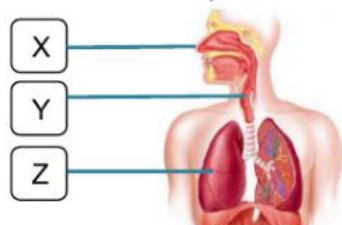
2) A, B and C only

3) A, C and D only

4) A, B, C and D

( )

15. The diagram below shows the parts of a human respiratory system.







Based on the diagram, which of the following statements is/are true?

- A Part Y transports air from part X to part Z.
- B Gaseous exchange is carried out at part Z.
- C Part X allows air to enter and leave the body.
- D Part Z contains air sacs surrounded by tiny blood vessels.

- 1) C only
- 2) B and D only
- 3) B, C and D only
- 4) A, B, C and D

( )

16. What will be the result of the following activities?

- Oil spills from ships at sea.
- Discharge of chemical wastes by factories into drains.
- Soil is blown into the river after the nearby trees are cut down.

- 1) Desalination
- 2) Water pollution
- 3) Water conservation
- 4) Water consumption

( )

### Section B (20 pts)

Open-ended question (10 x 2 marks)

1. Water is needed in order for different parts of the human digestive system to carry out their functions. Complete the table below to show how water helps in the digestion of food in the mouth, stomach and small intestine.

	Part of the human digestive system	How water helps in the digestion of food
(a)	Mouth	
(b)	Stomach	
(c)	Small intestine	

2. What is the role of water in the following human systems?  
(a) Respiratory system

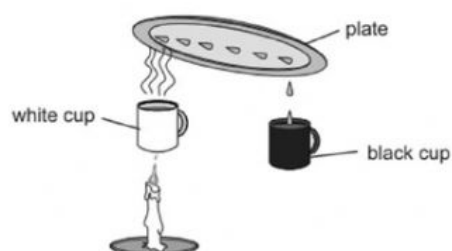




(b) Circulatory system

3. Sara and Ruth are shipwrecked on a desert island.

They are very thirsty and make some drinking water from sea water.  
Sara and Ruth use things they find from the shipwreck.  
Here is their apparatus.



Which cup contains the sea water at the start?

.....

4. The table below shows the melting and boiling points of 4 substances P, Q, R and S.

Substance	Melting Point ( $^{\circ}\text{C}$ )	Boiling Point ( $^{\circ}\text{C}$ )
P	50	130
Q	175	300
R	100	275
S	0	100

Based on the table above write down the states (solid, liquid or gaseous) of 4 substances at  $125^{\circ}\text{C}$ .

Substance	State
P	
Q	
R	
S	

\*\*\*\*\* End of Paper \*\*\*\*\*

