

Topic: Reproductive parts of a plant – części roślin słownictwo

Petal – płatek

Ovule – zalążek

Stem – łodyga

Bulb – bulwa, cebulka

Roots – korzenie

Pistil – słupek

Filament – nitka pręcika

Anther – pylnik

Stigma – znamię słupka

Stamen – pręcik

Ovary – zalężnia

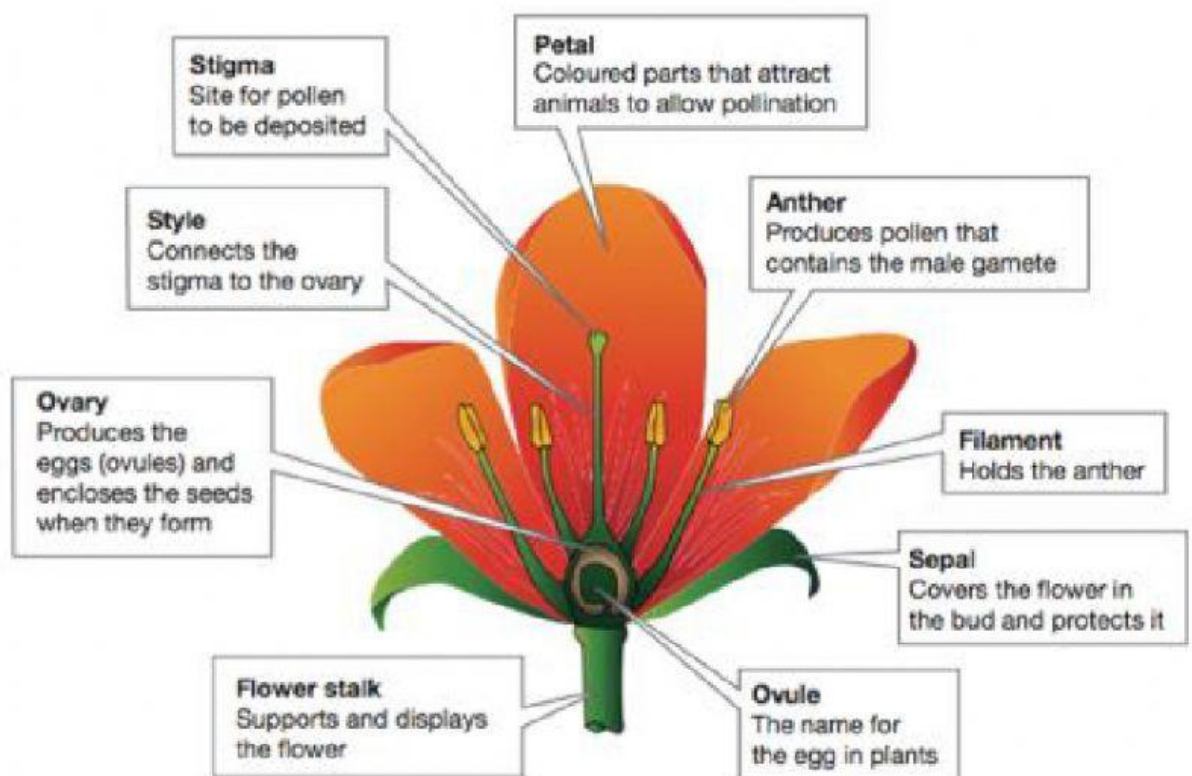
Sepals - działka kielicha

Blossom – kwiecie

Carpel – słupek

Pollen – pyłek

style - słupek



Pistil - Stamen - Anther - Stigma - Ovary - Filament - Ovules - Style -

FEMALE ORGANS	MALE ORGANS

Released SOL Test Questions Sorted by Topic

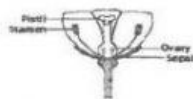
SOL 4.4 PLANTS

The student will investigate and understand basic plant anatomy and life processes. Key concepts include

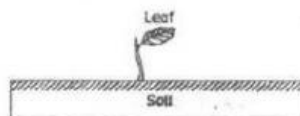
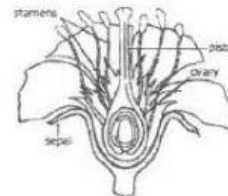
- a. the structures of typical plants and the function of each structure;
- b. processes and structures involved with plant reproduction;
- c. photosynthesis; and
- d. adaptations allow plants to satisfy life needs and respond to the environment.

PLANT PARTS

- Which of these is a *function of a leaf*?
(2011 test - question 19)
 - a. Carrying nutrients throughout the plant
 - b. Converting solar energy into sugar
 - c. Creating shade for the plant
 - d. Absorbing water from the ground
- Which *part* of a sunflower plant *absorbs* water and nutrients?
(2008 test - question 34)
 - a. Roots
 - b. Stems
 - c. Leaves
 - d. Flowers
- In a flower, what most likely happens when *pollen* from the stamen gets into the ovary?
(2011 test - question 20)
 - a. The plant dies.
 - b. A seed develops.
 - c. The flower closes.
 - d. The sepals fall off.
- The two structures most *plants* use to gather nutrients and energy to live are —
(2002-8)
 - a. roots and leaves
 - b. roots and flowers
 - c. stems and roots
 - d. stems and leaves



- What *part* of the flower produces *pollen*?
(2009 test - question 40)
 - a. ovary
 - b. sepal
 - c. pistil
 - d. stamen



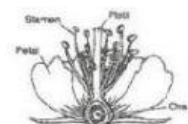
- The picture shows a sprouting bean plant. The leaf produced will help the plant by —
(2008-7)
 - a. absorbing water from the air for nourishment
 - b. using sunlight for energy in food production
 - c. reproducing more bean plants for survival of the species
 - d. adding support for the plant as it grows taller

Violet Plants

Parts	Function
Roots	Anchor plant, absorb water
Stem	Support and transport
Leaves	Produce energy
Flowers	?

- The table lists the parts of a violet plant and their functions. What is the *function of violet flowers*?
(2007-13)
 - a. Release oxygen
 - b. Produce seeds
 - c. Absorb sunlight
 - d. Promote growth

- Pollen* is produced in the —
(2005-9)
 - a. ovary
 - b. pistil
 - c. petal
 - d. stamen

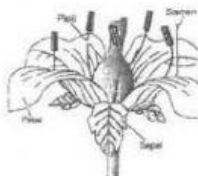


- Which of these is a main function of this *plant's roots*?
(2003-20)
 - a. Making seeds
 - b. Producing pollen
 - c. Absorbing nutrients
 - d. Storing chlorophyll



10. Which of these **plant parts** forms the seeds?
(2001-35)

a. The stamen
b. The pistil
c. The sepals
d. The petals



11. What do plants take in through their root systems?
(2006-10)

a. Light
b. Water
c. Carbon dioxide
d. Oxygen

PHOTOSYNTHESIS

12. **Photosynthesis** occurs in which of these organisms?
(2018-18)

a. Sunflower plant
b. Mushroom
c. Sunfish
d. Luna moth

13. Which of the following do **plants** need to make their own food?
(2006-28)

a. Flowers
b. Bacteria
c. Sunlight
d. Oxygen

14. The substance that makes **plants** green is known as —
(2001-28)

a. water
b. calcium
c. chlorophyll
d. carbon dioxide

15. Which of these is a process that allows plants to convert light energy into food energy?
(2001-9)

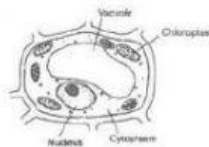
a. Reproduction
b. Excretion
c. Digestion
d. Photosynthesis

16. Why is **photosynthesis** important for plants?
(2005-34)

a. It collects sunlight which is used to make food for plants.
b. It gets rid of plant waste products.
c. It changes plant sugar into stronger chemicals.
d. It helps attract insects to plant flowers.

17. In which plant **cell structure** does photosynthesis occur?
(2006-32)

a. Vacuole
b. Chloroplast
c. Cytoplasm
d. Nucleus



18. In plant cells, chloroplasts —
(2003-23)

a. act as the cell's control center
b. enable plant cells to produce their own food
c. allow materials to move into and out of the cell
d. support and protect the cell

19. For the native birds and mammals of Virginia to survive, plant life must be conserved. What do plants provide directly to all animals?
(2010-6)

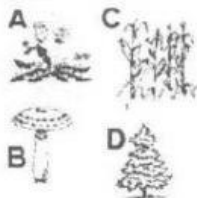
a. Oxygen
b. Minerals
c. Light
d. Hydrogen

20. Which gas is given off by **plants**?
(2007-28)

a. Hydrogen
b. Nitrogen
c. Oxygen
d. Helium

SPORES

21. Which of these is not a plant?
(2004-2)

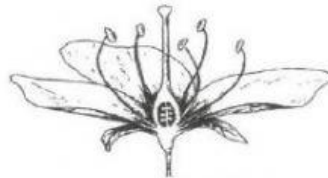
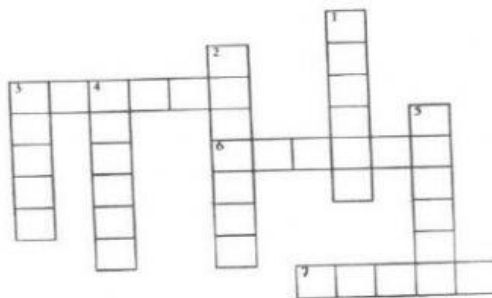


22. One way that **mosses and ferns** are similar is they both —
(2004-29)

a. are flowering plants
b. produce spores
c. grow in areas with little rainfall
d. are dormant during the winter

Parts of a Flower

Complete the crossword puzzle using what you know about the subject. Refer to the word bank if you need help.



Word Bank

pistil
stamen
ovary
sepals
stigma
anther
blossom
petal

Across

3. Pollen travels through this tube
6. Provides support for the pollen maker
7. Contains the egg cells

Down

1. Traps pollen
2. Reproductive structure found on many plants called a flower or this
3. Attracts insects and birds
4. Protected the flower bud before it opened
5. Makes pollen