

Test 1

Student name:

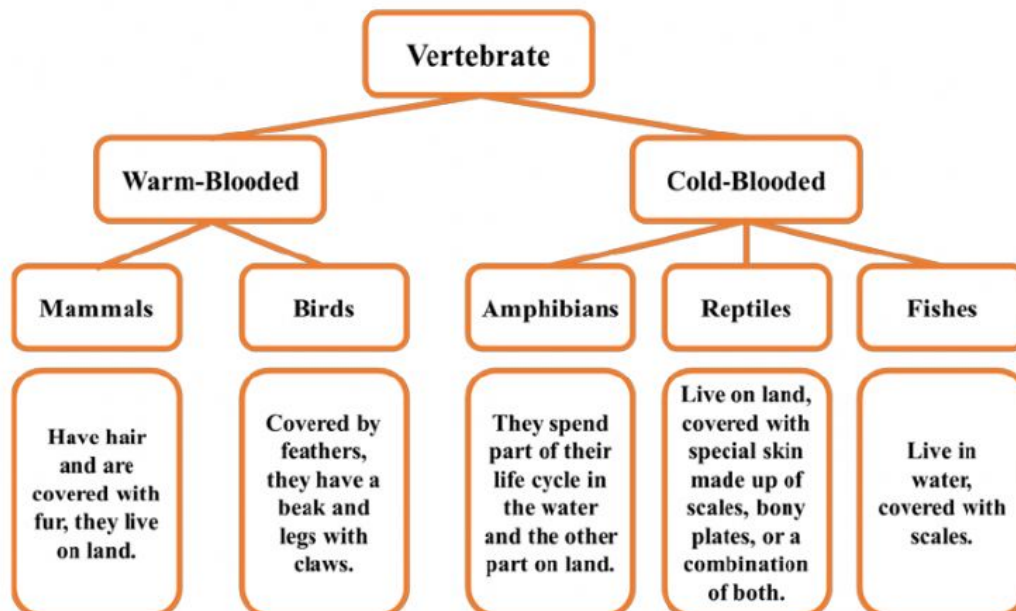
Class:

Binary choice items

- Write (T) if the statement is TRUE, and write (F) if the statement is FALSE.
(5 marks - for each question 1 mark)
- The plant cell contains a large vacuole while the animal cell contains a small vacuole. ()
- When the organs work and synergies together, they form an organ system that performs specific vital functions. ()
- Living creatures in the kingdoms of bacteria and fungi can move from one place to another. ()
- Algae belong to the kingdom of Protista and are among the Protista that make their own food. ()
- One of the reactants in the photosynthesis that occurs in plant cell is carbon monoxide. ()

Multiple binary choice items

- The animal kingdom is classified into two groups of animals (invertebrates, vertebrates), use the following figure about the characteristics of vertebrates to determine whether each of the statement below is correct or incorrect, by selecting (Correct) or (Incorrect).
(4 marks - for each statement 1 mark)



The statements	Correct or Incorrect	
- The salamander is considered a reptile.	Correct	Incorrect
- The owl has claws and a beak.	Correct	Incorrect
- The shark is covered with scales.	Correct	Incorrect
- The blue whale is considered a fish.	Correct	Incorrect

Multiple choice items

- Choose the correct letter, A, B, C or D:
(5 marks - for each question 1 mark)
 - Which of the following parts are found in a plant cell only?
 - A. Chromosome.
 - B. Cell membrane
 - C. Plastids.
 - D. Mitochondria.
 - What is the kingdom whose creatures consist of multiple cells and make their food?
 - A. The plants.
 - B. Protista.
 - C. The animals.
 - D. Fungi.
 - What are the two substances produced by photosynthesis?
 - A. Carbon dioxide and glucose.
 - B. Oxygen and water.
 - C. Water and carbon dioxide.
 - D. Glucose and oxygen.

- What are the characteristics that mollusks and arthropods share?
 - A. They have a backbone.
 - B. They have exoskeletons.
 - C. They haven't backbone
 - D. They are unable to move.

- Which of the following characteristics do all birds and mammals have?
 - A. They have a backbone and produce milk.
 - B. They have a backbone and take care of their young.
 - C. They have a backbone and lay eggs
 - D. They lay eggs, and their body temperature is constant

Matching items

- Match column A with the corresponding characteristics in column B:
(5 marks - for each column 1 mark)

column A

Cnidarians
Worms
Arthropods
Sponges
Mollusks
Echinoderms

column B

has skin that bears thorns
Animals with arms ending with stinging cells
have mollusk bodies
It has a head and a tail and is classified into 3 groups
The simplest invertebrates, it has a bag-like shape, with an opening at the top

Short-Answer items

- **Fill in the blanks with an appropriate word:**

(5 marks - for each question 1 mark)

- The smallest and basic structural unit of living matter is
- Group of similar cells and synergistic together are called
- The largest group to which living creatures are classified is
- Any of a group of plants that produce seeds are called
- The animals that have a backbone and a skeleton are

Essay items

- **Answer the following two questions:**

(10 marks - for each question 5 mark)

- How are plant cell and animal cell similar, and how are they different? Give examples.

- Some vertebrates live in water and land, such as amphibians, so what do they use to breathe on land and underwater? Give an example.

Performance assessment items

- Answer the following question:
 - Draw the photosynthesis process of plants, and show the steps by writing the reactants and products.
(6 marks)