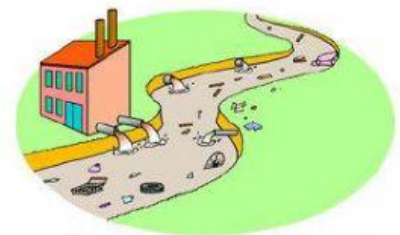
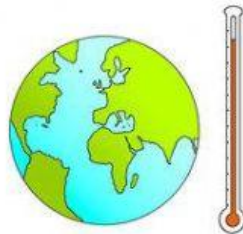


Relate the following terms with the photo and the definition below:

1. Global Warming / 2. Recycling / 3. Alternative energy / 4. Pollution / 5. Melting ice caps / 6. Deforestation / 7. Littering / 8. Polluted water



- ☐ It is to throw or leave trash on the ground.
- ☐ It is when waste, chemicals, or other particles cause a body of water (i.e. rivers, oceans, lakes) to become harmful to the fish and animals that need the water to survive.
- ☐ A term used to describe the rising of the average temperature on Earth. It has to do with the overall climate of the Earth rather than the weather on any given day.
- ☐ It is when a glacier starts to unfreeze because of human activities, especially the burning of fossil fuels which has increased the amount of carbon dioxide in the atmosphere leading to global warming.
- ☐ It is when gases, smoke and chemicals are introduced into the environment in large doses that makes it harmful for humans, animals and plants.
- ☐ It is the clearing, or cutting down, of forests.
- ☐ It is the process of taking materials ready to be thrown away and converting (changing) them into reusable materials. This is important to reducing trash in the world's landfills, which pollute Earth's soil, water, and air.
- ☐ It is usable power (such as heat or electricity) that comes from a renewable or green resource.