

Test 2

LISTENING

PART 1 Questions 1–10

Complete the notes below.

Write **ONE WORD AND/OR A NUMBER** for each answer.

Copying photos to digital format
Name of company: Picturerep
Requirements <ul style="list-style-type: none">Maximum size of photos is 30 cm, minimum size 4 cm.Photos must not be in a 1 or an album.
Cost <ul style="list-style-type: none">The cost for 360 photos is 2 £ (including one disk).Before the completed order is sent, 3 is required.
Services included in the price <ul style="list-style-type: none">Photos can be placed in a folder, e.g. with the name 4The 5 and contrast can be improved if necessary.Photos which are very fragile will be scanned by 6
Special restore service (costs extra) <ul style="list-style-type: none">It may be possible to remove an object from a photo, or change the 7A photo which is not correctly in 8 cannot be fixed.
Other information <ul style="list-style-type: none">Orders are completed within 9Send the photos in a box (not 10).

PART 2 Questions 11–20

Questions 11–14

Choose the correct letter, A, B or C.

- 11 Stevenson's was founded in
- A 1923.
 - B 1924.
 - C 1926.
- 12 Originally, Stevenson's manufactured goods for
- A the healthcare industry.
 - B the automotive industry.
 - C the machine tools industry.
- 13 What does the speaker say about the company premises?
- A The company has recently moved.
 - B The company has no plans to move.
 - C The company is going to move shortly.
- 14 The programme for the work experience group includes
- A time to do research.
 - B meetings with a teacher.
 - C talks by staff.

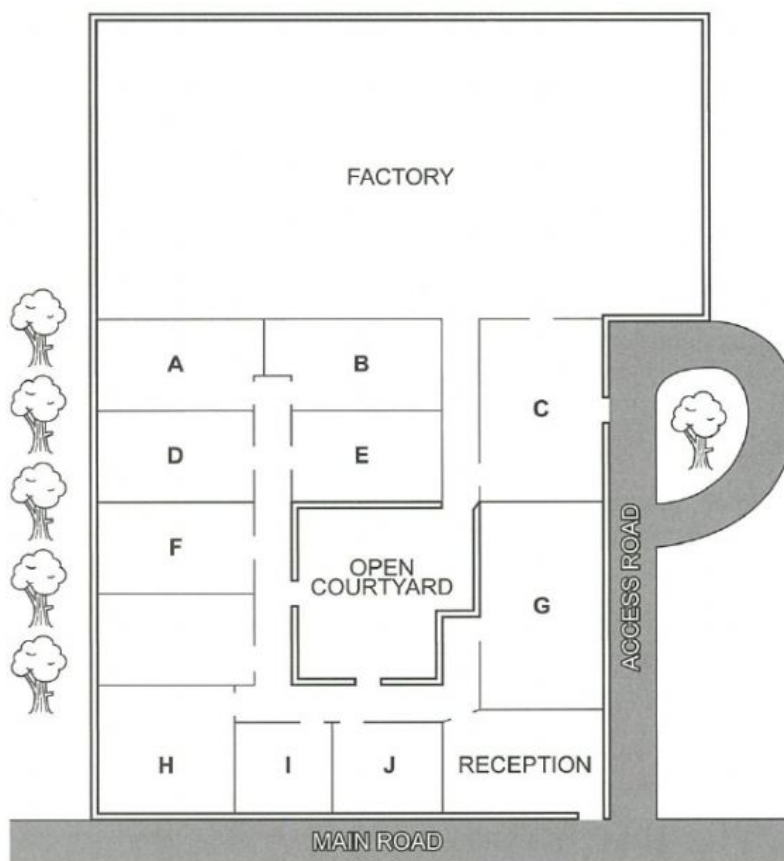
Test 1

Questions 15–20



Label the map below.

Write the correct letter, **A–J**, next to Questions 15–20.

Plan of Stevenson's site



- 15 coffee room
.....
- 16 warehouse
.....
- 17 staff canteen
.....
- 18 meeting room
.....
- 19 human resources
.....
- 20 boardroom
.....

12 →  p. 121  p. 99

PART 2 Questions 11–20

Questions 11–14

Choose the correct letter, A, B or C.

Local council report on traffic and highways

- 11 A survey found people's main concern about traffic in the area was
- A cuts to public transport.
 - B poor maintenance of roads.
 - C changes in the type of traffic.
- 12 Which change will shortly be made to the cycle path next to the river?
- A It will be widened.
 - B It will be extended.
 - C It will be resurfaced.
- 13 Plans for a pedestrian crossing have been postponed because
- A the Post Office has moved.
 - B the proposed location is unsafe.
 - C funding is not available at present.
- 14 On Station Road, notices have been erected
- A telling cyclists not to leave their bikes outside the station ticket office.
 - B asking motorists to switch off engines when waiting at the level crossing.
 - C warning pedestrians to leave enough time when crossing the railway line.

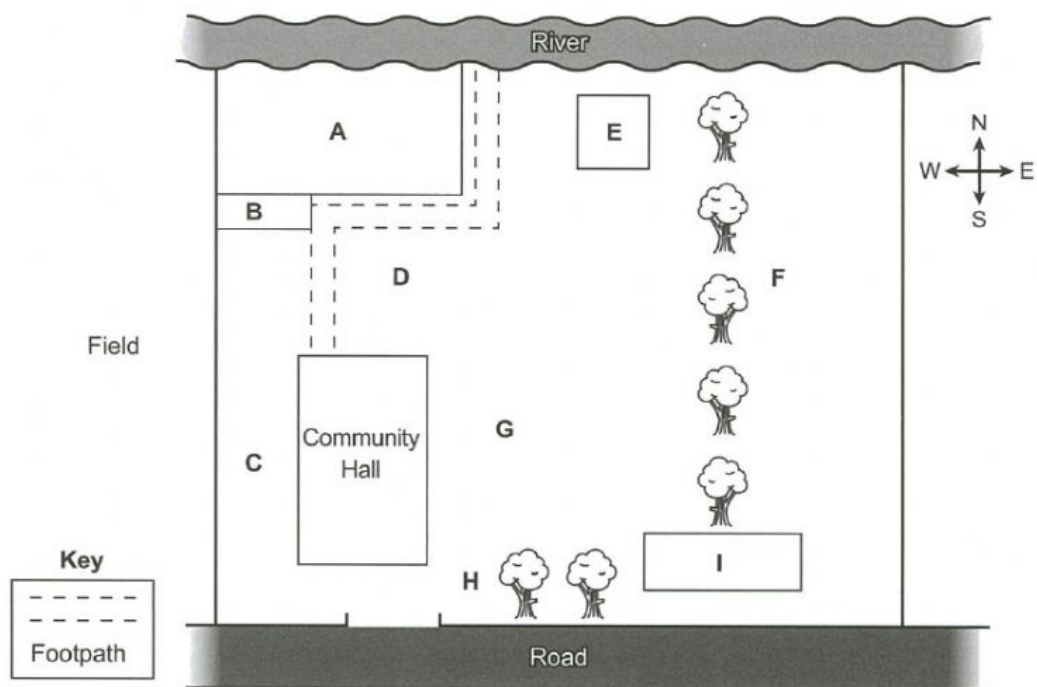
Test 4

Questions 15–20

Label the map below.

Write the correct letter, A–I, next to Questions 15–20.

Recreation ground after proposed changes



- | | | |
|----|-----------------------|-------|
| 15 | New car park | |
| 16 | New cricket pitch | |
| 17 | Children's playground | |
| 18 | Skateboard ramp | |
| 19 | Pavilion | |
| 20 | Notice board | |