

Part 1

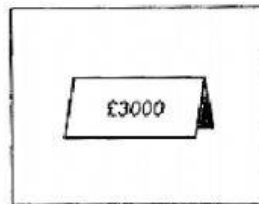
- 1 How much is the car?



A

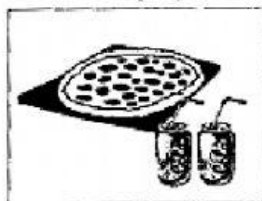


B

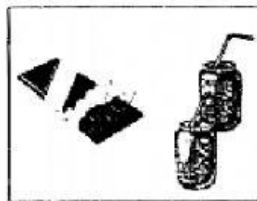


C

- 2 What's Elena going to take to the party?



A



B



C

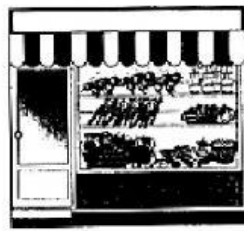
- 3 Where will Susan buy her eggs?



A



B

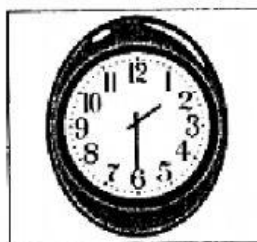


C

- 4 What time does the film begin?



A

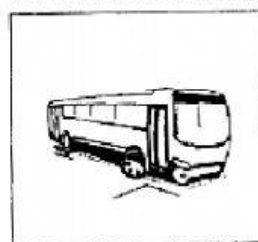


B



C

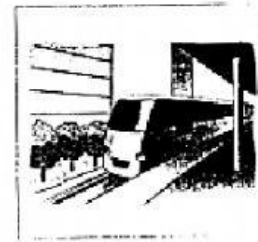
- 5 How will the man travel to London?



A



B



C

Part 2

Things

6 swimming pool

☐

7 car park

☐

8 café

☐

9 football club

☐

10 tennis lessons

☐

Problems

A big

B cold

C dirty

D expensive

E hot

F late

G noisy

H small

Part 3

11 What time do the photography classes begin?

A 5.15 p.m.

☐

B 6.00 p.m.

☐

C 6.45 p.m.

☐

12 How much does Philip pay for the photography course?

A £55

☐

B £75

☐

C £95

☐

13 Philip's happy with the course because he's

A learning about famous photographers.

☐

B using a new camera.

☐

C getting better at photography.

☐

14 Philip thinks it's easy to take photographs of

A trees.

☐

B animals.

☐

C children.

☐

15 After the course, Philip will

A buy a new camera.

☐

B get a job in photography.

☐

C make photography his hobby.

☐

WESTWOOD ENGLISH SCHOOL

Evening classes on: Thursday

Next course starts on:

16

22

Speaking class with:

17

Miss

Cost for 12 classes:

18

£

Address:

19

Fitzroy Square

School is next to the:

20

Finchester Zoo

Closed on:

Monday

Closing time in summer:

21

p.m.

Meeting place for tour:

22

At 2 p.m., see:

23

eat their food.

Zoo shop sells:

24

books and

Child's ticket costs:

25

£