

PAPER 2 LISTENING (approximately 30 minutes including 8 minutes transfer time)

PART 1

QUESTIONS 1–5

You will hear five short conversations.

You will hear each conversation twice.

There is one question for each conversation.

For questions 1–5, put a tick ☒ under the right answer.

EXAMPLE

0 How many people were at the meeting?

3

A ☐

13

B ☐

30

C ☒

1 Which is Tom's mother?



A ☐

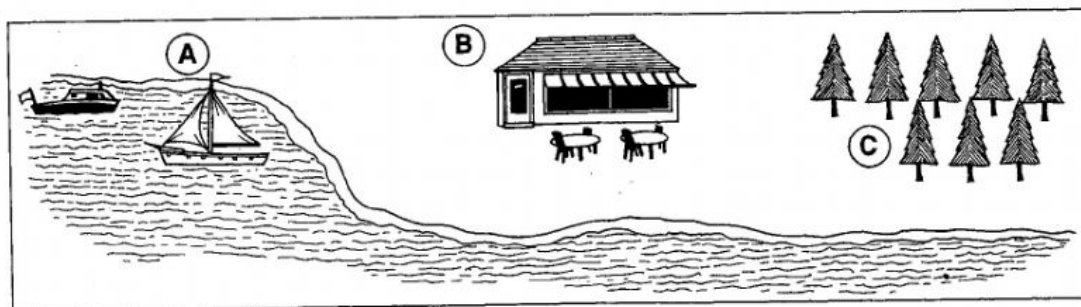


B ☐



C ☐

2 Where will the beach party be?

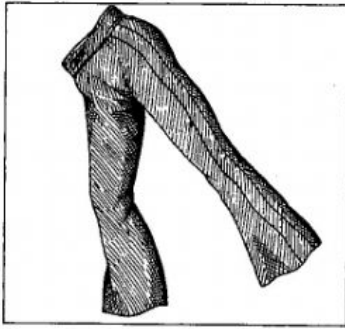


A ☐

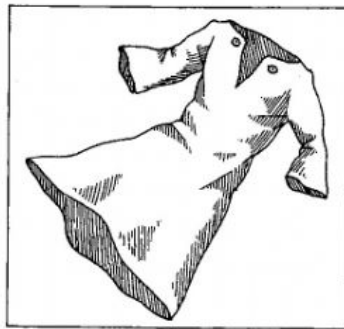
B ☐

C ☐

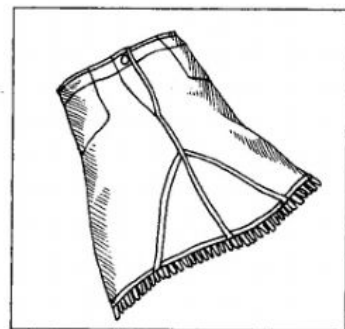
3 What will Fiona wear to the dance?



A ☐

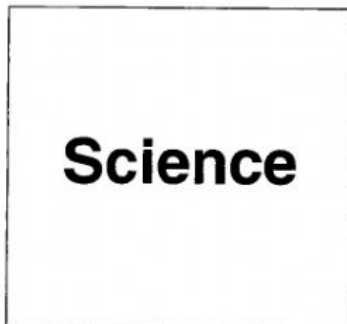


B ☐

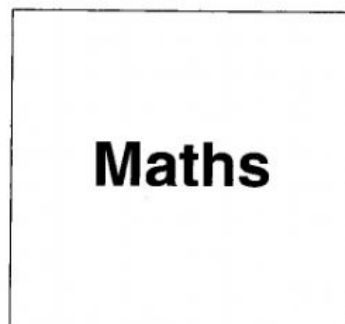


C ☐

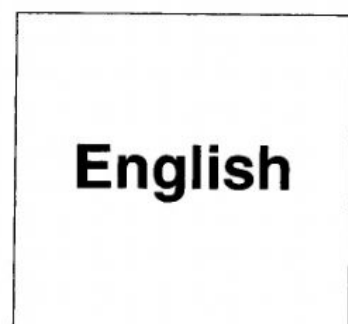
4 What homework is the girl doing now?



A ☐

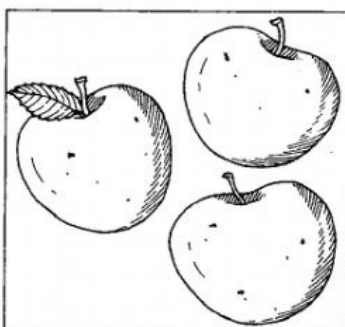


B ☐

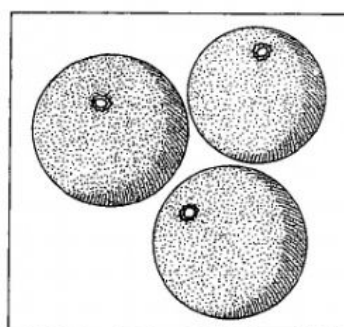


C ☐

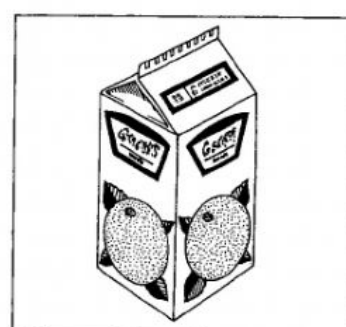
5 What's David going to buy?



A ☐



B ☐



C ☐

PART 2

QUESTIONS 6–10

Listen to Sonya talking to Martin about her family.

How old are her brothers and sisters?

For questions 6–10, write a letter A–H next to each person.

You will hear the conversation twice.

EXAMPLE

0 Sonya

☐ H

PEOPLE

6 Sally

☐

7 Vivienne

☐

8 Roger

☐

9 Frank

☐

10 Deborah

☐

AGES

A two

B five

C seven

D ten

E thirteen

F fifteen

G eighteen

H twenty

PART 3**QUESTIONS 11–15**

Listen to a woman asking a travel agent for some information about a park in the mountains.

For questions 11–15, tick ☒ A, B or C.

You will hear the conversation twice.

EXAMPLE	ANSWER
0 The woman will visit the park for	
A one week.	<input checked="" type="checkbox"/>
B two weeks.	<input type="checkbox"/>
C four weeks.	<input type="checkbox"/>

11 In the park, there is

- | | |
|------------------|--------------------------|
| A a café. | <input type="checkbox"/> |
| B a hotel. | <input type="checkbox"/> |
| C a guest-house. | <input type="checkbox"/> |

12 The village has a

- | | |
|------------------|--------------------------|
| A swimming pool. | <input type="checkbox"/> |
| B cinema. | <input type="checkbox"/> |
| C food shop. | <input type="checkbox"/> |

13 You can only go through the park

- | | |
|------------|--------------------------|
| A by car. | <input type="checkbox"/> |
| B by bus. | <input type="checkbox"/> |
| C on foot. | <input type="checkbox"/> |

Test 4

14 On weekdays, a visit to the park costs

A \$12.

☐

B \$13.

☐

C \$16.

☐

15 In the park, the woman will see

A animals.

☐

B flowers.

☐

C snow.

☐

PART 4**QUESTIONS 16–20**

You will hear Mats talking to his friend, Sarah, about a trip to Manchester in England.

Listen and complete questions 16–20.

You will hear the conversation twice.

TRIP TO MANCHESTER

Go to Manchester in:

October

Temperature in autumn:

16

degrees

Will need to wear:

17

Name of train station in London:

18

Cost of train:

19

£

Take Sarah some:

20

PART 5

QUESTIONS 21–25

You will hear some information about a museum.

Listen and complete questions 21–25.

You will hear the information twice.

THE REDFERN MUSEUM	
Open:	Monday to Thursday
You can see:	
Downstairs	21 old
Upstairs: pictures by	22 artists
Concerts during month of:	23
Student ticket:	24 £
Telephone number:	25

You now have 8 minutes to write your answers on the answer sheet.