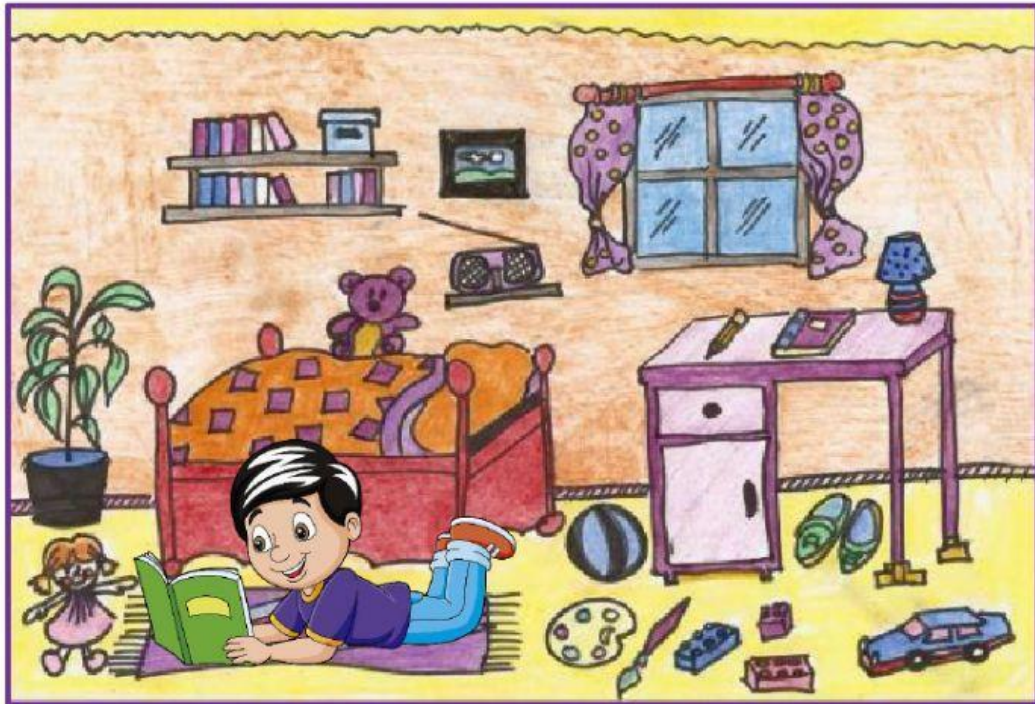


Prepositions of location

in on under near next to at
above between behind in front of



1. The radio is _____ the shelf.
2. The ball is _____ the desk and the bed.
3. The shoes are _____ the desk.
4. The doll is _____ the boy.
5. The teddy bear is _____ the bed.
6. The picture is _____ the radio.
7. The plant is _____ the doll.
8. The bed is _____ the bedroom.
9. The desk is _____ the window.
10. The toy car is _____ the floor.
11. The pencil and the lamp are _____ the desk.
12. The Legos are _____ the paintbrush and the toy car.
13. The plant is _____ the pot.
14. The ball is _____ the boy.
15. The book is _____ the pencil and the lamp.