



DL DAV Model School

ND Block , Pitampura, Delhi- 34



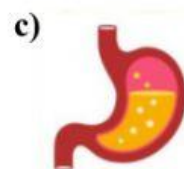
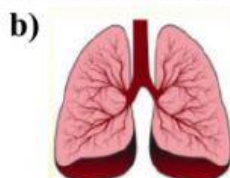
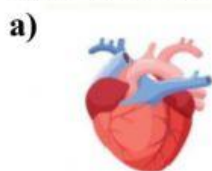
14.12.21

Science Worksheet

Q1. Write True or false for the following statements.

- The organs that are present inside our body are called external organs. _____
- An insect is an animal with four legs, fins and hard shell _____
- In the life cycle of the butterfly larva stage is also called caterpillar stage. _____
- Brain is located in the skull. _____

Q2. Label the given organs of human body



Q3. Choose the correct option.

a) Which animal breathes through its gills?



b). What is the main function of Stomach?

- Breathing
- Thinking
- Pumping
- Digesting

c) What is a baby plant called?

- Seedling
- String
- Twig
- Acorn

d) What is a horse baby called?

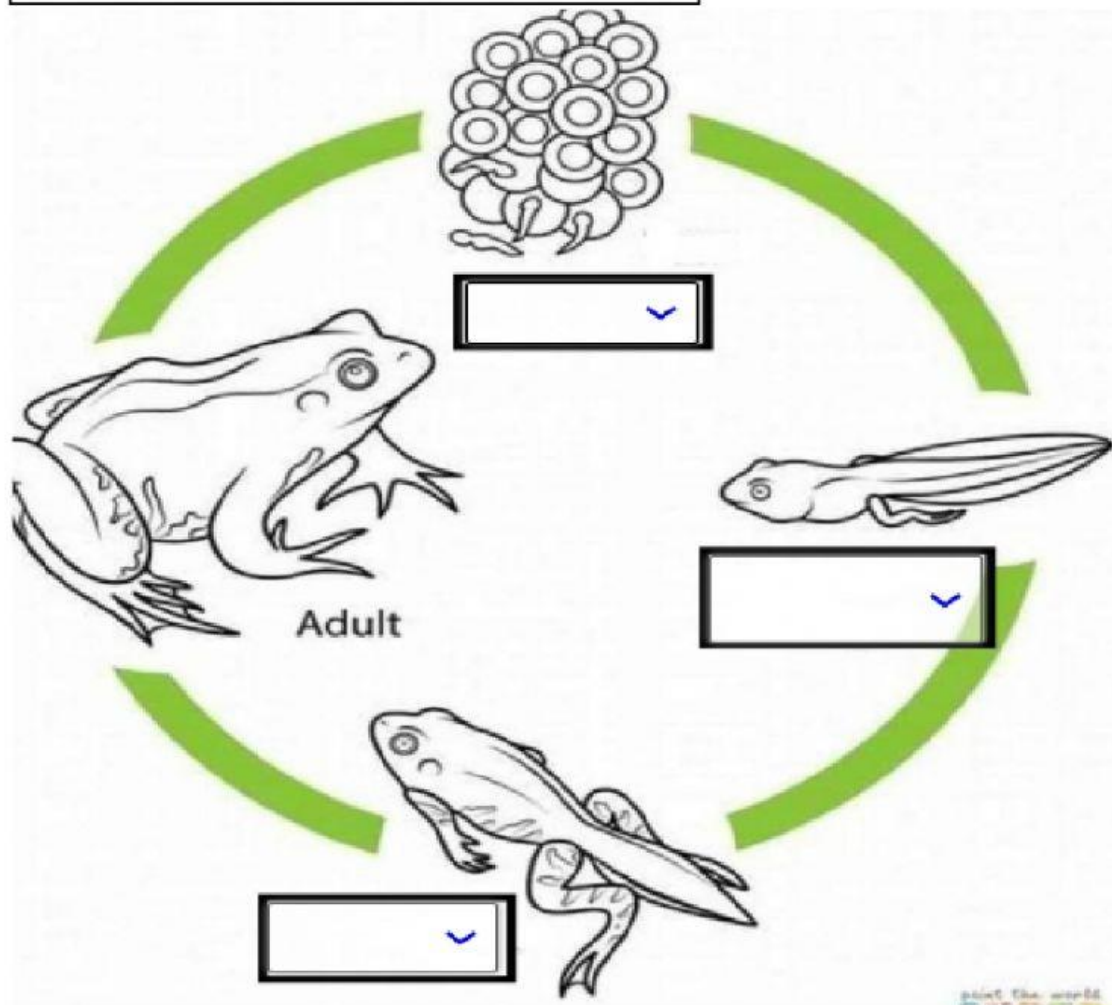
- Lamb
- Foal
- Kid
- Chick

e) The time from the birth of an animal to its death is called _____.

- It's life
- Its life style
- It's living
- Its life cycle

Q4. Complete the life cycle of frogs with the given help box.

Tadpole , Froglet , Eggs



Q5. Match the following.

- | | |
|-------------------|------------------|
| A. Vulture | eggs |
| B. Chicken | amphibian |
| C. Lungs | bird |
| D. Frog | breathe |