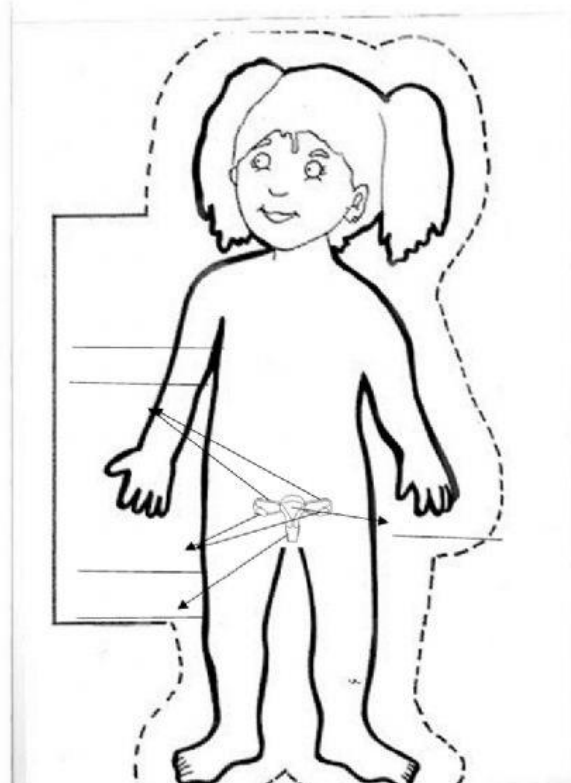
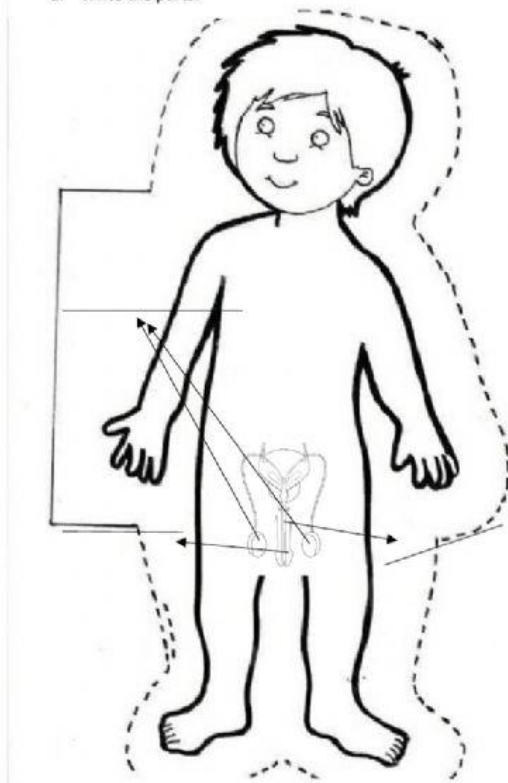


MALE REPRODUCTIVE SYSTEM FEMALE REPRODUCTIVE SYSTEM

1. Write the parts.



LIVEWORKSHEETS

MALE REPRODUCTIVE SYSTEM FEMALE REPRODUCTIVE SYSTEM

2. Complete.

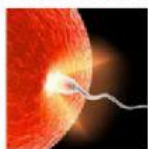
_____ travels from the _____
along the _____ and the _____
to the outside.

Every _____ an _____ travels
from the _____ along the _____
_____, uterus and the _____
to the outside.

If it's _____ by a sperm, it stays in
the _____ for _____ months.

3. Drag and drop the boxes in the correct place.

From fertilised egg to new born baby



The fertilised egg
divides again and
again and attachaes to
the wall of the uterus.

After nine months
the baby is born.

The egg is fertilized
by the sperm.

At three months the
fetus has all its organs.
It is the size of an
avocado.

The embryo develops
from the fertilized egg. It
is as small as a seed and
does not have a face.

The fetus gets the
nutrients and
oxygen through
the umbilical cord.

LIVEWORKSHEETS