

Section A. Multiple choice (1pt each)

Instructions: Choose the answer by circling the letter next to the correct answer.

1. Which group of animals are **ALL** invertebrates?
 - a. Spider, fish, bird
 - b. Insects, crabs, centipedes
 - c. ducks, octopus, lizards
 - d. Birds, flamingo, cows

2. What is the scientific name for the skull?
 - a. Head bone
 - b. Mandible
 - c. Cranium
 - d. Brain

3. Which two organs are protected by the ribs?
 - a. Brain and lungs
 - b. Heart and lungs
 - c. Stomach and heart
 - d. Brain and stomach

4. There are _____ bones in an adults body.
 - a. 206
 - b. 260
 - c. 26
 - d. 620

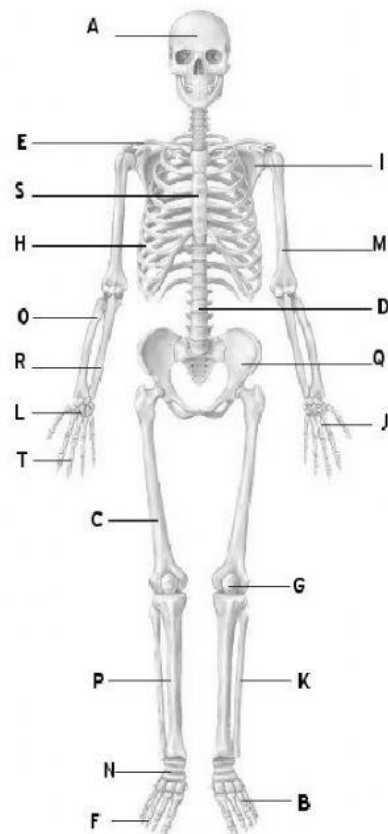
5. _____ connect muscles to bones.
 - a. Collagen
 - b. Joints
 - c. Tendons
 - d. Ligaments

6. Contracting and relaxing are movements of _____
- a. Bones
 - b. Muscles
 - c. Joints
 - d. Organs
7. Which muscle is found in the heart?
- a. Cardiac
 - b. Smooth
 - c. Skeletal
 - d. Hard
8. About how many glasses of water should we drink a day?
- a. 3 to 4
 - b. 6 to 8
 - c. 9 to 12
 - d. 12 to 16
9. What are the tiny openings under the leaf called?
- a. Pores
 - b. Chlorophyll
 - c. Roots
 - d. Stomata
10. The lack of iron in the body is known as _____
- a. Hypertension
 - b. Obesity
 - c. Heart disease
 - d. Anemia

11. Plants make their own food by a process called _____
- a. Hibernation
 - b. Migration
 - c. Metamorphosis
 - d. Photosynthesis
12. Which of the following is a major source of food in The Bahamas?
- a. Queen conch
 - b. Cows
 - c. Mushroom
 - d. Squids
13. Insect reproduce by _____
- a. Growing a new body
 - b. Laying eggs
 - c. Giving birth to babies
 - d. Shedding skin
14. _____ transmit the germ that causes Dengue fever.
- a. Rats
 - b. Flies
 - c. Cockroaches
 - d. Mosquitoes
15. Which is **NOT** the job of the skeletal system?
- a. Support and give shape to the body
 - b. Protect the organs
 - c. Enables the body to move
 - d. Make blood cells.

Section B. Write the name of the parts of the skeletal system next to the correct letter.

The Skeletal System



Concepts and Challenges in Life Science, Teacher's Resource CD-ROM
(c) by Pearson Education, Inc./Glencoe Pearson Learning Group. All rights reserved.

Transparency Masters, page 16

16. A- _____

19. Q- _____

17. I- _____

20. G- _____

18. D- _____

21. S- _____

22. Which letter identifies the largest and strongest bone in the body? _____

23. Which TWO letters identify the bones called phalanges?

_____ and _____

Section C. Match the word in Column A to the meaning in Column B.

- | | |
|----------------------|---------------------------------------|
| 24. Conch | a. bush medicine |
| 25. tentacle | b. helps bones grow strong and health |
| 26. vectors | c. mollusks |
| 27. hibernation | d. arm-like part |
| 28. calcium | e. spread germs and disease |
| 29. chlorophyll | f. a long, deep sleep. |
| 30. medicinal plants | g. gives plant a green colour. |

Section D. Structured Questions

Instructions: Answer the following questions in complete sentences.

31. Define the term vectors (2pts)

32. Name two ways the breeding of mosquitoes can be reduced.
(2pts)

33. List three types of muscles and tell where they are found.
(6pts)

34. Name three benefits of drinking water. (3pts)

35. What are indigenous plants? (2pts)

36. Name **THREE** ways we can conserve plants. (3pts)

37. Define the term 'instinct'. (2pts)
