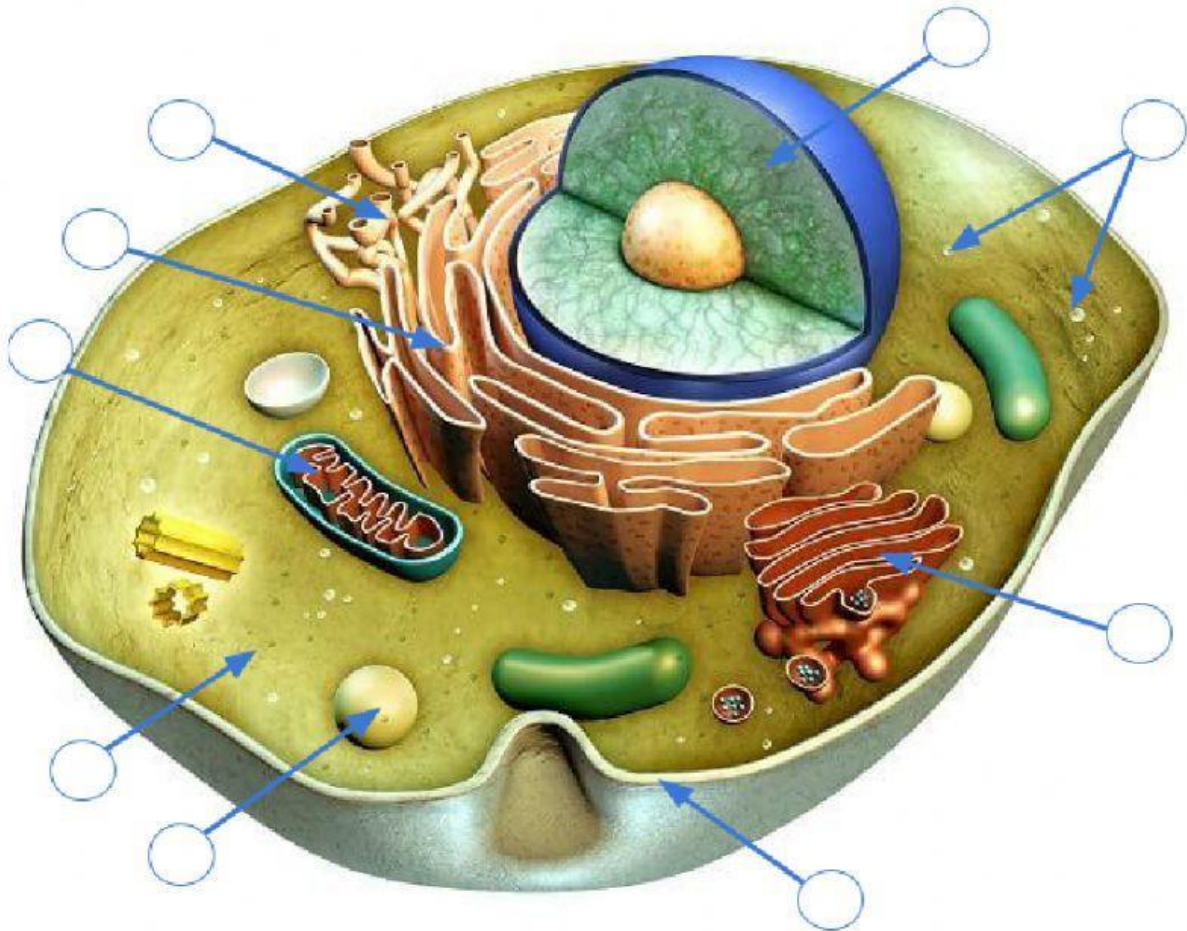


The Cell City

Instructions: Label the organelles of the cell and then match the structures of the city with the cell's organelles below, based on their functions.



A. Mitochondrion

B. Ribosomes

C. Cytoplasm

D. Nucleus

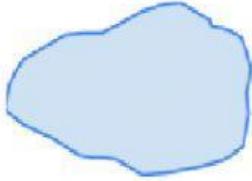
E. Golgi Apparatus

F. Lysosome

G. Rough Endoplasmic Reticulum

H. Smooth Endoplasmic Reticulum

I. Cell Membrane



A. Mitochondrion

B. Ribosomes

C. Cytoplasm

D. Nucleus

E. Golgi Apparatus

F. Lysosome

G. Rough Endoplasmic Reticulum

H. Smooth Endoplasmic Reticulum

I. Cell Membrane