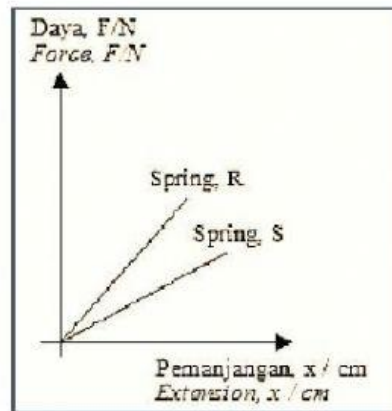


- 22 Rajah 13 menunjukkan graf daya- pemanjangan bagi spring R dan S.
Diagram 13 shows force-extension graph of spring R and S.



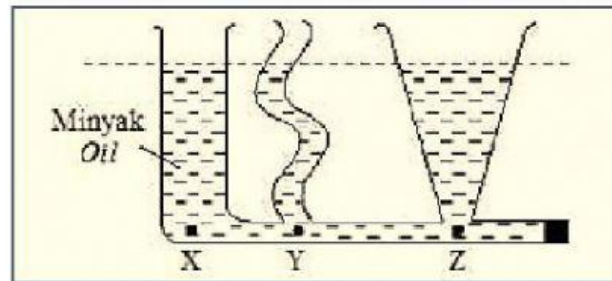
Rajah 13
Diagram 13

Antara yang berikut, pernyataan manakah yang betul?

Which of the following statement is correct?

- A Spring S berdiameter kecil
Spring S has smaller diameter of coil
- B Spring R mempunyai ketebalan dawai yang kecil
Spring R has smaller thickness of wire
- C Spring S lebih panjang dari R
Spring S is longer than R
- D Spring R dan S diperbuat dari bahan yang sama
Spring R and S are made of same material

- 23 Rajah 14 menunjukkan sebuah bekas yang berbeza bentuk diisi dengan minyak pada paras yang sama. Tekanan yang disebabkan oleh minyak pada titik X, Y dan Z adalah P_x , P_y dan P_z .
Diagram 14 shows a container of 3 different shapes are filled with oil at the same level. The pressure caused by the oil at point X, Y and Z are P_x , P_y dan P_z respectively.



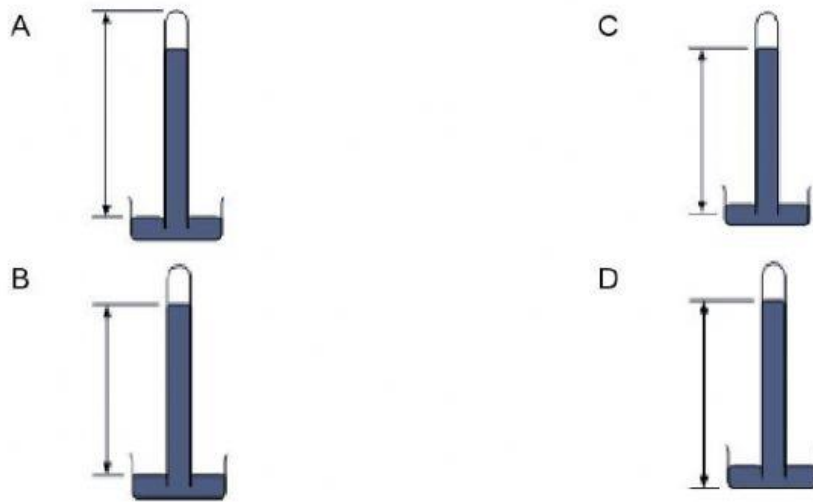
Rajah 14
Diagram 14

Antara yang berikut, perbandingan yang manakah betul?

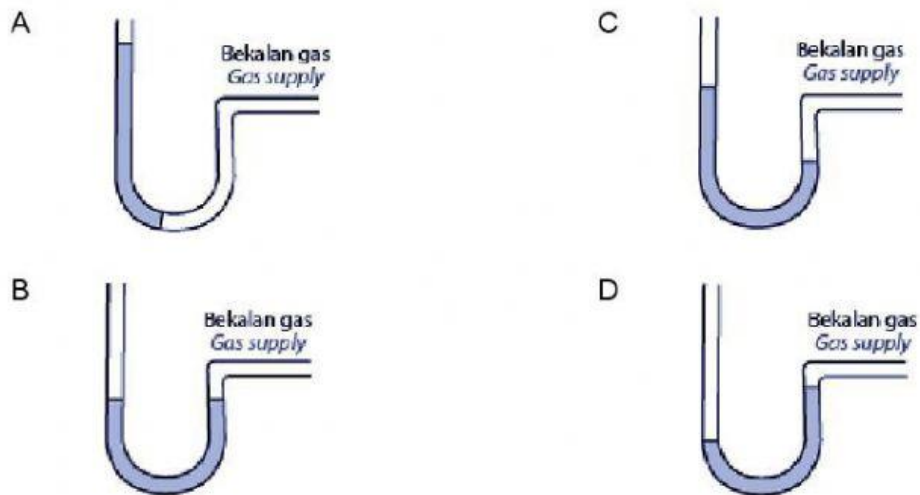
Which of the following comparison is correct?

- A $P_y < P_x < P_z$
- B $P_x < P_y < P_z$
- C $P_y = P_x = P_z$

- 24 Antara rajah berikut, yang manakah betul untuk mengukur tekanan atmosfera?
 Which of the following diagrams is correct to measure atmospheric pressure?



- 25 Antara rajah berikut, yang manakah menunjukkan bahawa tekanan daripada bekalan gas adalah yang paling tinggi?
 Which of the following shows that the pressure from the gas supply is the highest?



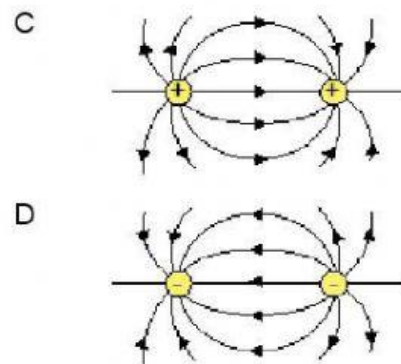
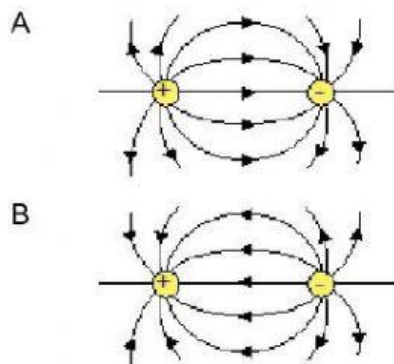
- 26 Rajah 15 menunjukkan satu aerofoil.
Diagram 15 shows an aerofoil.



Rajah 15
Diagram 15

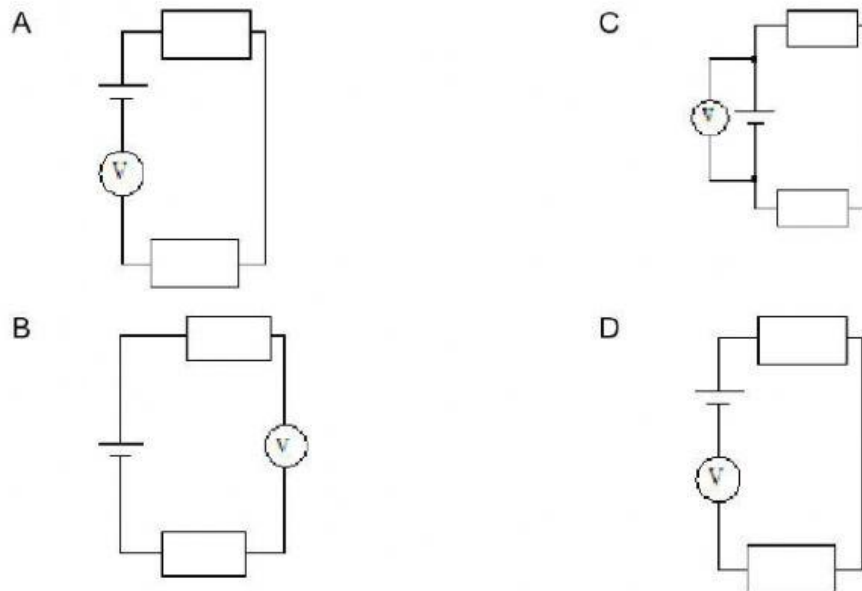
Bahagian manakah pada aerofoil mempunyai tekanan yang paling tinggi?
Which part of the aerofoil has the highest pressure?

- A P
 - B Q
 - C R
 - D S
- 27 Rajah manakah yang menunjukkan corak medan elektrik yang betul?
Which diagram shows the correct electric field pattern?



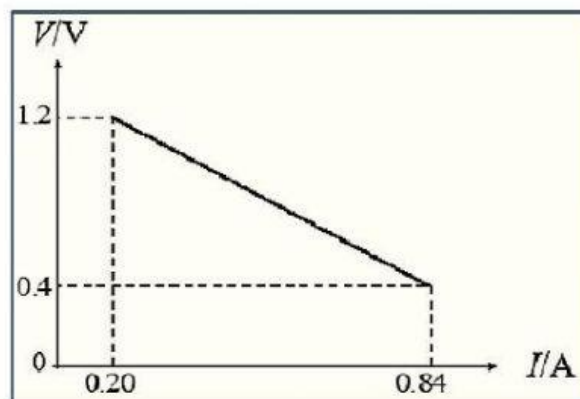
- 28 Litar yang manakah menunjukkan sambungan voltmeter yang betul untuk mengukur beza keupayaan merentasi sel kering?

Which circuit shows the correct connection of voltmeter to measure the potential difference across a cell?



- 29 Rajah 16 menunjukkan graf voltan, V – arus, A .

Diagram 16 shows a voltage, V – current, A graph.



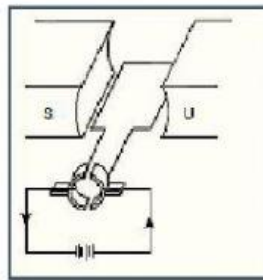
Rajah 16
Diagram 16

Berapakah rintangan dalam sel itu?

What is the internal resistance of the cell?

- A 1.25 Ω
- B 0.80 Ω
- C 1.16 Ω
- D 1.43 Ω

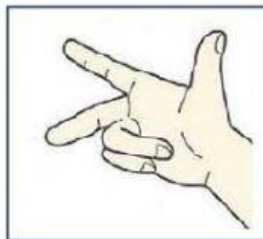
- 30 Rajah 17 menunjukkan gegelung membawa arus dalam satu medan magnet.
Diagram 17 shows the current-carrying coil in a magnetic field.



Rajah 17
Diagram 17

Nyatakan arah putaran gegelung apabila suis dihidupkan.
State the direction of rotation of the coil when the switch is turned on.

- A Pegun
Stationary
- B Arah lawan putaran jam dan arah putaran jam secara berselang-seli
Anti-clockwise and clockwise rotation alternately
- C Arah putaran jam
Clockwise rotation
- D Arah lawan putaran jam
Anti-clockwise rotation
- 31 Rajah 18 menunjukkan tiga jari yang digunakan dalam Petua Tangan Kanan Fleming.
Diagram 18 shows the three fingers used in Fleming's right hand rule.

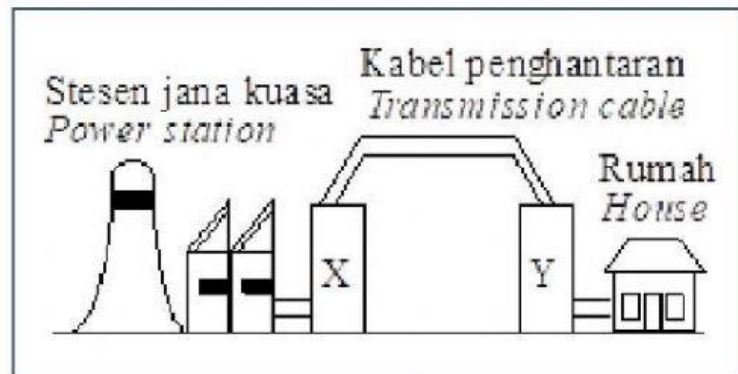


Rajah 18
Diagram 18

Apakah yang diwakili oleh ibu jari dalam Petua Tangan Kanan Fleming?
What is represented by thumb in Fleming's right hand rule?

- | | |
|----------------------------|---|
| A Daya
<i>Force</i> | C Medan magnet
<i>Magnetic field</i> |
| B Gerakan
<i>Motion</i> | D Arus aruhan
<i>Induced current</i> |

- 32 Rajah 19 menunjukkan model penghantaran elektrik.
 Diagram 19 shows a model of transmission of electricity.



Rajah 19
 Diagram 19

Transformer manakah yang betul untuk X dan Y?
 Which transformers are correct for transformer X and Y?

	X	Y
A	Transformer injak naik <i>Step-up transformer</i>	Transformer injak naik <i>Step-up transformer</i>
B	Transformer injak naik <i>Step-up transformer</i>	Transformer injak turun <i>Step-down transformer</i>
C	Transformer injak turun <i>Step-down transformer</i>	Transformer injak turun <i>Step-down transformer</i>
D	Transformer injak turun <i>Step-down transformer</i>	Transformer injak naik <i>Step-up transformer</i>