

Name:

Date:

RESPIRATORY SYSTEM

Label the parts of the respiratory system.

Pharynx

Trachea

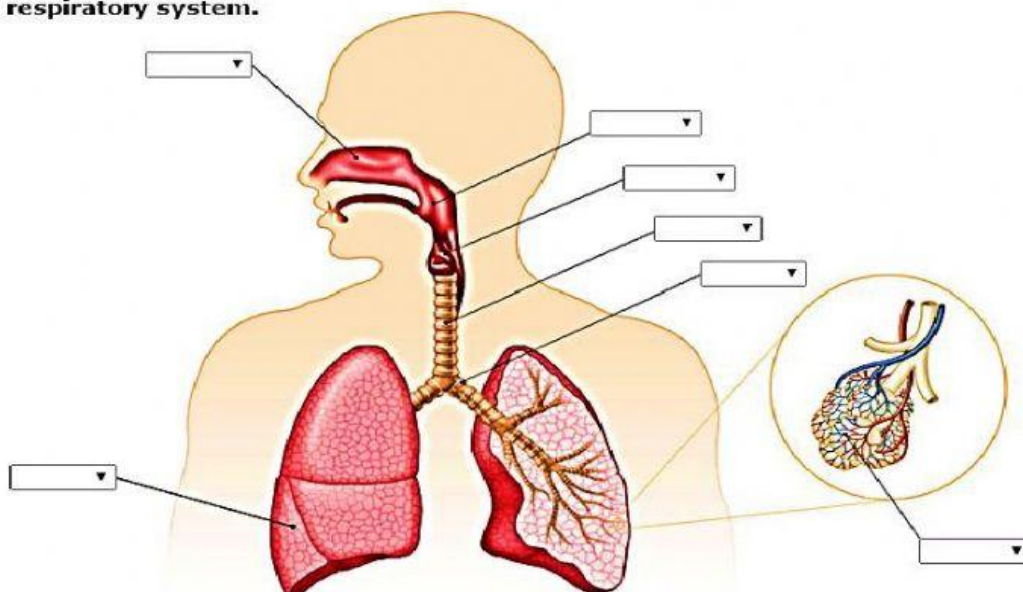
Alveolus

Bronchi

Larynx

Lung

Nostrils



Match the examples with the correct way of breathing.

Leaves

Pulmonary

Tracheal

Cutaneous

Gills



Read the definitions and write the correct term.

The gas we breathe in that is essential to life:

The trachea divides into these two, thinner tubes:

A muscle found below the lungs that helps us to breathe:

Respiratory movement of air entering the lungs:

Spongy, elastic organs which are protected by the ribs and sternum:

inhalation

diaphragm

bronchi

lungs

oxygen