

BACTERIA

vs

VIRUS

HELICAL POLYHEDRAL SPHERICAL COMPLEX

--	--	--	--

ANIMAL VIRUS

Attacks _____ cells.

Ex:

PLANT VIRUS

Attacks _____ cells.

Ex:

BACTERIOPHAGE

Attacks _____ cells.

Ex:

BACTERIA VIRUS

# of cells		
Reproduction		
Size		
Infection		
Treatment		
Examples		

Bacteria is usually classified by:

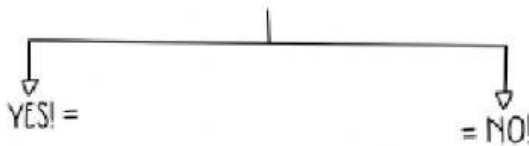
SHAPE

- ○ (_____)
- — (_____)
- ~ (_____)
- ⊞ (_____)

CELL WALL composition

- GRAM _____ red
- GRAM _____ blue

NEED OXYGEN?



NUTRIENT SOURCE

- 💡 PHOTOAUTOTROPHIC ⇨
- 🧪 CHEMOAUTOTROPHIC ⇨
- 🦠 HETEROTROPHIC ⇨
- 🦠 PATHOGENIC ⇨
- 🤝 SYMBIOTIC ⇨
- 🍄 SAPROPHYTIC ⇨

?? How are bacteria and viruses different ??
How are they the same?
