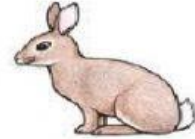


1.- Write the comparative form

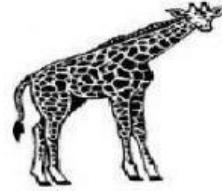
1.-The ostrich is _____ than the rabbit. (big)

2.-The rabbit is _____ the ostrich. (small)



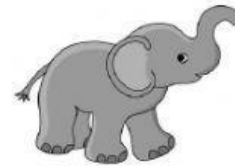
3.-The giraffe is _____ than the cat.(tall)

4.- The _____. (Short)



5.- The elephant is _____ than the lizard.(heavy)

6.- _____.(light)



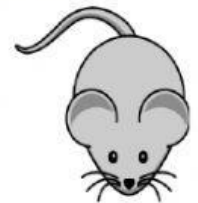
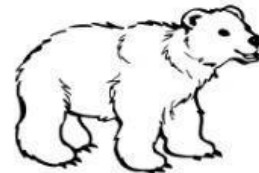
7.- The rabbit is _____ the turtle. (fast)

8.-The _____.(slow)



9.-The bear is _____ than the mouse.

10.- _____.



11.- The lion is _____ than the snake.

12.- _____.



14.- The grandfather is _____ than the boy.

15.- _____.



16.- The man is _____ than the boy.

17.- _____.

