

Mini Test

Part 1 Picture Description

Listen and choose the statement that best describes the picture.

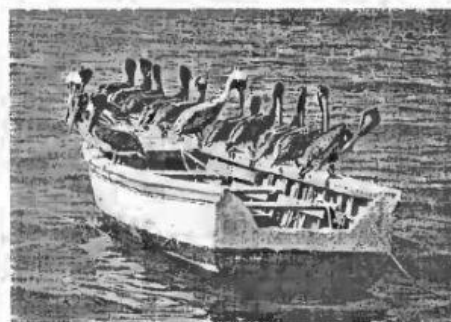
1.



(A) (B) (C) (D)

2.

(A) (B) (C) (D)



3.



(A) (B) (C) (D)

4.



(A) (B) (C) (D)

5.

(A) (B) (C) (D)



Part 2 Questions and Responses

Listen and choose the correct answer.

1. (A) (B) (C)
2. (A) (B) (C)
3. (A) (B) (C)
4. (A) (B) (C)
5. (A) (B) (C)

Part 3 Short Conversations

Listen and choose the correct answer.

1. What does the man want to do?
(A) Use the computer (B) Break the computer
(C) Fix the computer (D) Buy the computer

 2. What can't the woman do?
(A) Use a computer (B) Save documents
(C) Sell computers (D) Find a computer

 3. What does the woman have tomorrow?
(A) A meeting (B) A big project
(C) A business lunch (D) A presentation
-
4. Where are the man and woman?
(A) In a library (B) At the movies
(C) At a train station (D) At a travel agency

 5. What does the man want?
(A) A ticket to New York (B) A more expensive ticket
(C) A ticket to Los Angeles (D) A train ticket

 6. What is the problem?
(A) The man is sick.
(B) The ticket is too expensive.
(C) There are no more tickets.
(D) The man lost his ticket.

Part 4 Short Talks

Listen and choose the best answer to each question.

1. What time will the flight now be leaving at?
(A) At 6:00 (B) At 7:00
(C) At 7:15 (D) At 7:50

2. At what gate do the passengers now have to leave from?
(A) 23A (B) 32A
(C) 22B (D) 22A

3. Where is the flight traveling?
(A) From Ireland to Spain (B) From Spain to Iceland
(C) From Iceland to Spain (D) From Spain to Ireland

4. Where is the bear?
(A) To the people's left (B) To the people's right
(C) Behind the people (D) Above the people

5. Which is closest to King's age?
(A) Five years (B) Seven years
(C) Ten years (D) Sixteen years

6. How many bears do they have at Funland?
(A) Nine (B) Eleven
(C) Seven (D) Ten