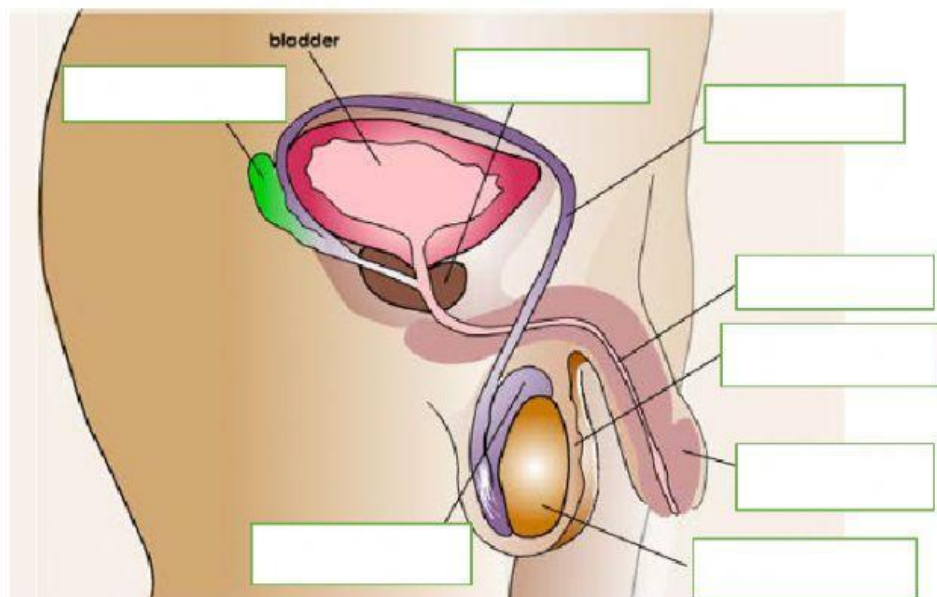


School: \_\_\_\_\_

Date: \_\_\_\_\_

**Label the parts of the female and male reproductive systems below. (1 pt. each)**



**Choose the correct answer from the options given.** (Functions of the parts of the female reproductive system.) (1 pt. each)

1. The \_\_\_\_\_ produces ovum.
2. The \_\_\_\_\_ accommodates and protects the embryo/
3. The \_\_\_\_\_ is a passage way for menstrual cycle, receives sperm from the penis, produces fluid for lubrication and is also the birth canal.
4. The \_\_\_\_\_ connects the uterus with the vagina and produces mucus for sperm movement.
5. The \_\_\_\_\_ channels the ovum from the ovary to the uterus. This is also the place where fertilization occurs.

**Choose the correct answer from the options given.** (Functions of the parts of the male reproductive system.) (1 pt. each)

6. The \_\_\_\_\_ is a sac which covers the testes and holds them outside the body. It protects the testes.
7. The \_\_\_\_\_ are the sexual organs that produce sperm and testosterone.
8. The \_\_\_\_\_ stores sperm and secretes fluid into the sperm ducts.
9. The \_\_\_\_\_ carry sperms from the testes to the urethra.
10. The \_\_\_\_\_ carries urine from the urinary bladder and sperms from the sperm ducts to outside the body. Semen and urine pass through here at different times.
11. The \_\_\_\_\_ matures and stores sperm.
12. The \_\_\_\_\_ secretes fluid into the semen. The fluid activates the sperms.
13. The \_\_\_\_\_ is the organ from which semen leaves the body and is deposited in the female reproductive system

**Word Bank:**

fertilization	one	sperm	ovulation
ovum	fallopian tube	menstrual cycle	uterus

**Fill in the blank spaces using the words provided in the word bank. (1 pt. each)**

14. The male sex cell is called \_\_\_\_\_.
15. The female sex cell is called \_\_\_\_\_.
16. The \_\_\_\_\_ is the process of ovulation and menstruation in women and other female primates.
17. The discharge of ova or ovules from the ovary is known as \_\_\_\_\_.
18. \_\_\_\_\_ happens during the ovulation period only.
19. \_\_\_\_\_ sperm reaches the egg and fertilizes it.
20. After being fertilized, the egg moves through the \_\_\_\_\_ to the \_\_\_\_\_ where it remains for the next nine months.

**Answer the question below in complete sentences. (2 pts.)**

21. In your own words, explain what happens the moment the sperm enters the female reproductive system up to fertilization.