

# Grammar

Put in **am** or **is** in the sentences below.

1. It \_\_\_\_\_ in the tree.

am

is



2. I \_\_\_\_\_ happy today.

am

is



3. He \_\_\_\_\_ my dad.




am

is



# Vocabulary

Listen and click the correct words.

	all	he	she
	was	one	the
	I	be	we

Look at the pictures carefully.  
Draw lines to match the  
pictures with the words that  
have the same meanings.



mad



glad



sad

# Spelling

Instructions: Look at the picture in each box. Say the name. Write the word.



# Reading Skills

Instructions: Put in the missing sounds below.



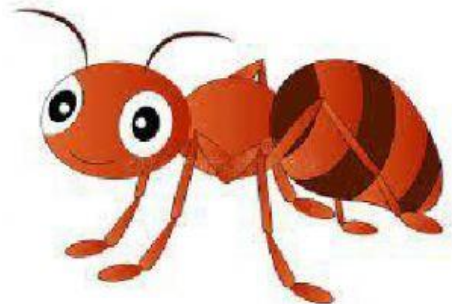
d	o	
---	---	--



f		n
---	--	---



	u	p
--	---	---



a		t
---	--	---

# Comprehension

Instructions: Put the pictures below in the correct order.



1	2	3
---	---	---



1

2

3



Draw lines to match the characters with a suitable setting.

