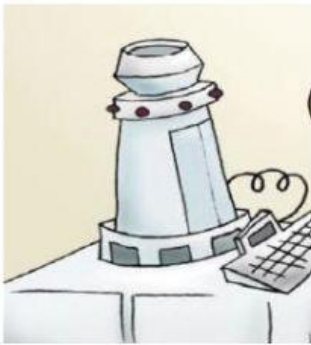


## ***Billions of Bats***

Name \_\_\_\_\_ Class \_\_\_\_\_ Date \_\_\_\_\_

### **Before you read**

#### **1- Tick the correct option.**



- a- This is Buzz's best object.
- b- This is a robot.
- c- The Cosmic copier is Sarah's special project.



- a- Buzz and Sarah are friends.
- b- They are not good friends
- c- They work very well together.



- a- Up to now, Sarah is a friendly person.
- b- She seems to be competitive with her classmates.
- c- She seems to be humble and quiet.

2- **Read** the book from page **14 to 21**. Are these sentences true (**T**) or false (**F**)

- a- Mindy is Sarah's pet.
- b- The assistant types in a wrong number in the Cosmic Copier.
- c- Buzz does not want the machine works well.
- d- Sarah got two "F" in her projects.
- e- The students love bats.

3- **Listen** to the people and tick how they feel.

Relaxed

Happy

Nervous

Disappointed

Scared

Tired

Sad

Surprised

Angry

4- Read and give your opinion.

Is Sarah a little bit bossy? Yes, not, why?