

PET PRACTICE TEST

TEST 1

PART 1

PART 1

Questions 1–5

- Look at the text in each question.
- What does it say?
- Mark the letter next to the correct explanation – **A, B or C** – on your answer sheet.

Example:

0

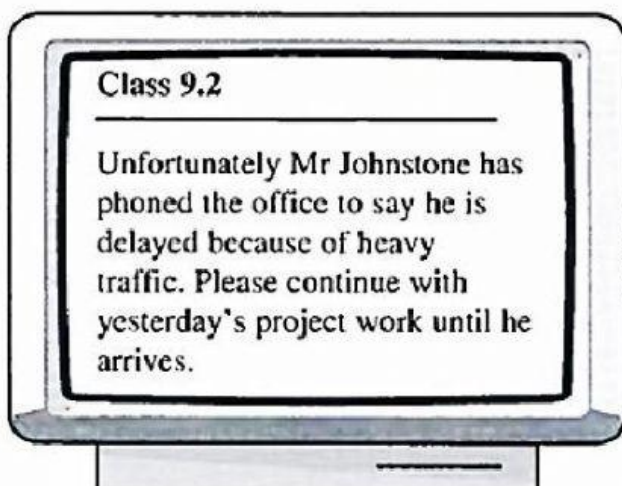


- A Do not leave your bicycle touching the window.
- B Broken glass may damage your bicycle tyres.
- C Your bicycle may not be safe here.

Example answer:

Part 1			
0	A <input checked="" type="checkbox"/>	B <input type="checkbox"/>	C <input type="checkbox"/>

1



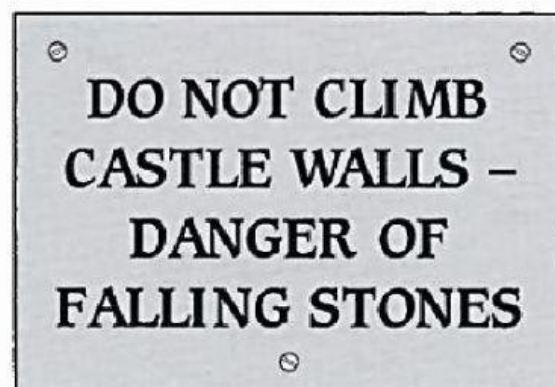
- A Mr Johnstone will unfortunately be unable to teach Class 9.2 today.
- B Class 9.2 should get on with some unfinished work for part of the lesson.
- C Students who arrive late to Mr Johnstone's class must tell the office.

2



- A It is essential to bring an identity card to the port.
- B This entrance is to be used only by people with identity cards.
- C To visit this area, go to the main entrance for an identity card.

3



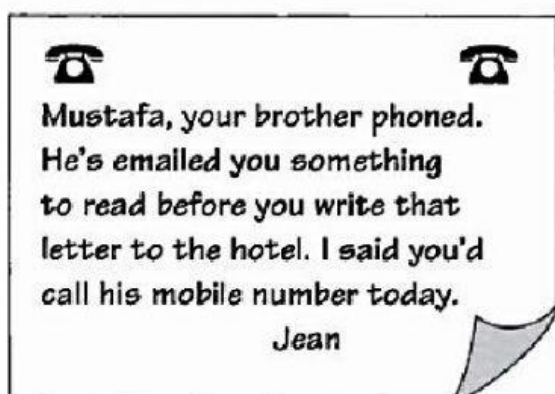
- A Do not climb the walls as they are dangerous.
- B There is a danger of falling on to the stones.
- C Check for loose stones before you climb.

4



- A A £10 fine will be payable later if you travel without a ticket.
- B If you lose your ticket, a new one will cost you £10.
- C You are fined £10 at once if you can't show us your ticket.

5



How should Mustafa reply to his brother?

- A by email
- B by phone
- C by letter

Activate Windows
Go to Settings to activate Windows.

TEST 2

PART 1

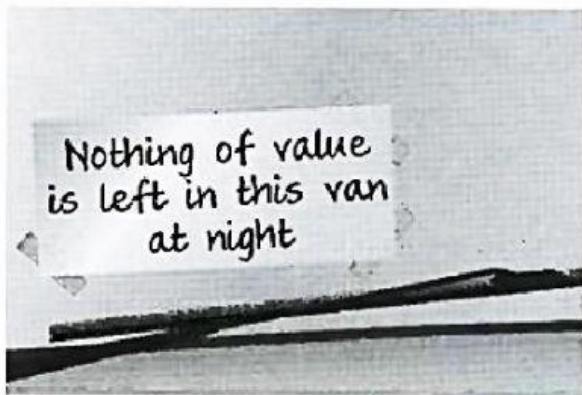
PART 1

Questions 1–5

- Look at the text in each question.
- What does it say?
- Mark the letter next to the correct explanation – A, B or C – on your answer sheet.

Example:

0

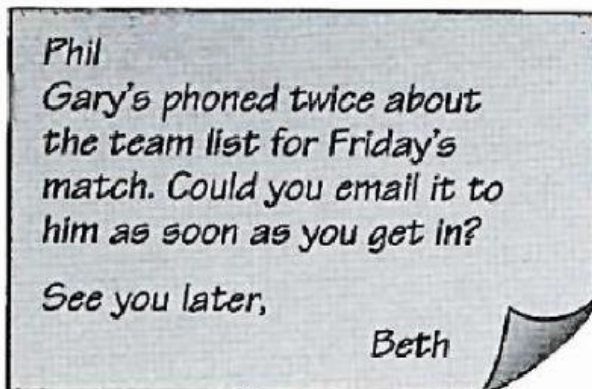


- A Valuable objects are removed at night.
- B Valuables should not be left in the van.
- C This van is locked at night.

Example answer:

Part 1			
0	A	B	C
	<input checked="" type="checkbox"/>	<input type="checkbox"/>	<input type="checkbox"/>

1



What must Phil do on his return?

- A phone Gary about the team list for Friday's match
- B get Gary to play in the football match on Friday
- C let Gary know who's playing football on Friday

2

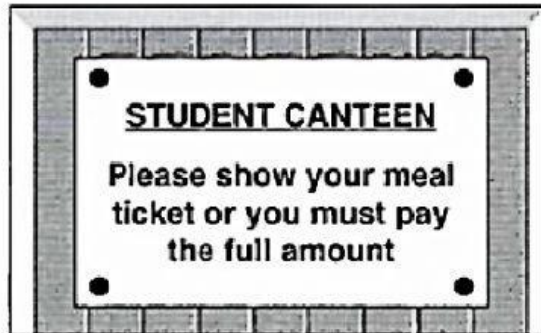
Keiko,
It was nice to see you yesterday.
I forgot to ask about your new
job. Well done! You must be
pleased. Let's meet for lunch
soon.

Jane

What is Jane doing in this card?

- A thanking Keiko for lunch
- B offering Keiko congratulations
- C giving Keiko some information

3



- A Students can buy meal tickets here at a discount.
- B Students are charged the normal price if they forget their meal tickets.
- C Students can buy food up to the amount shown on their meal tickets.

4



- A Rick would accept £80 for his bike.
- B Rick's bike only needs a few repairs.
- C Rick bought his bike two years ago.

5



- A Do not use this entrance to return vehicles to the factory.
- B Factory vehicles are turning here all the time.
- C Do not turn here as this entrance is used all the time.

TEST 3

PART 1

PART 1

QUESTIONS 1–5

- Look at the text in each question.
- What does it say?
- Mark the letter next to the correct explanation – **A**, **B** or **C** – on your answer sheet.

Example:

0

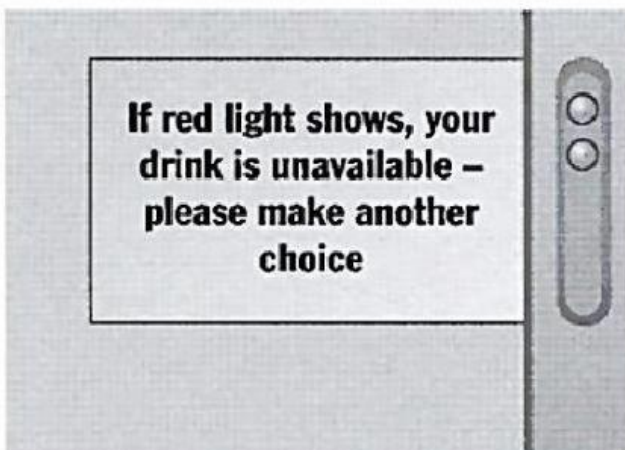


- A** Do not leave your bicycle touching the window.
- B** Broken glass may damage your bicycle tyres.
- C** Your bicycle may not be safe here.

Example answer:

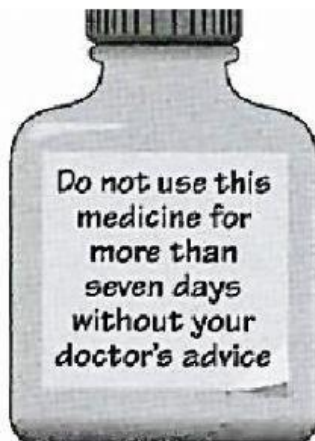
Part 1			
0	A	B	C
	<input checked="" type="checkbox"/>	<input type="checkbox"/>	<input type="checkbox"/>

1



- A** The red light goes on if the drinks machine is out of order.
- B** If the red light shows, you must wait before you decide on a drink.
- C** If the red light is on, you must choose a different drink.

2



- A Contact your doctor if you wish to continue using this medicine after one week.
- B Doctors can only supply enough medicine for one week at a time.
- C You cannot keep this medicine for more than seven days.

3



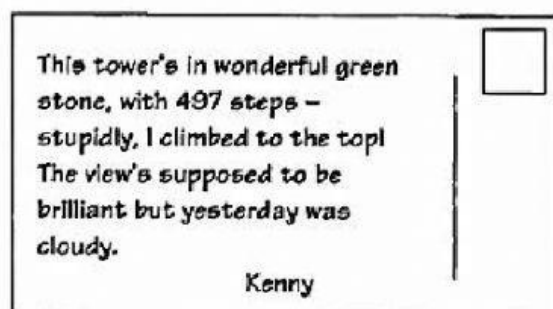
- A Sunflowers is selling exercise equipment to members at a special price.
- B You will qualify for a gift if you persuade a friend to join Sunflowers.
- C Your annual fee for Sunflowers Health Club must be paid now.

4



- A You should not park near here because it is an exit for vehicles.
- B This parking space is reserved for the vehicle's owner.
- C You are requested not to park any closer than 3 metres to this vehicle.

5



What did Kenny like about the tower?

- A the view it gave from the top
- B the material used to build it
- C the number of steps it has