

The cell Quiz

1. Which of the following is a function of a nerve cell?

- a. To help us think
- b. To produce energy
- c. To transport messages around the body
- d. To fight off bacteria
- e. To help us move

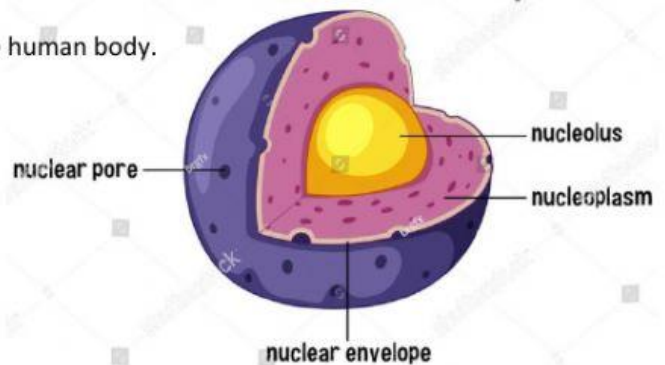
Human Nerve Cell



2. The nucleus is to the cell as the _____ is too the human body.

- a. Stomach
- b. Lungs
- c. Eyes
- d. Brain
- e. Ears

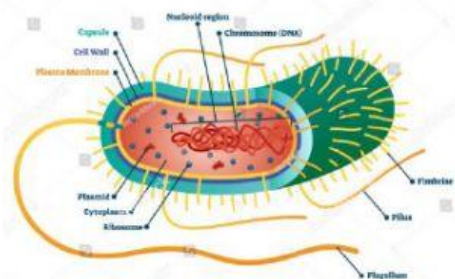
Cell Nucleus Anatomy



3. What is the name of the whip-like appendages that can help most prokaryotic cells move?

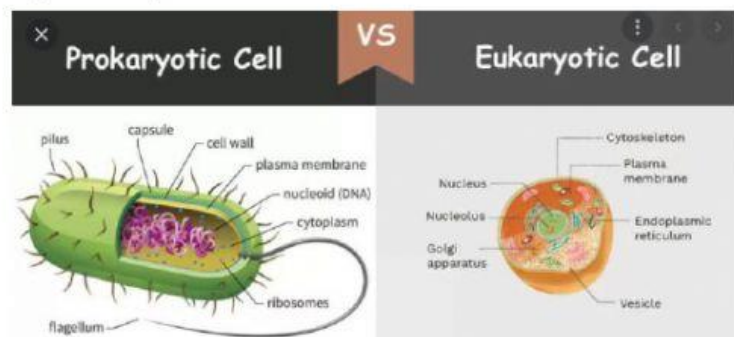
- a. Nucleus
- b. Flagella
- c. Mitochondria
- d. Ribosomes
- e. Lysosomes

PROKARYOTIC CELL



4. Which of the following is NOT made up of eukaryotic cells?

- a. Animals
- b. Bacteria
- c. Humans
- d. Plants
- e. None of the Above



5. True or False: Eukaryotic cells are typically a lot bigger and more complex than prokaryotic cells.

- a. TRUE
- b. FALSE

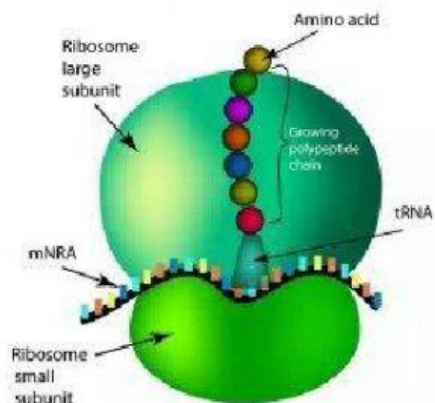
6. The skin is to the human body as the _____ is to the cell.

- a. Membrane
- b. Lysosomes
- c. Ribosomes
- d. Nucleus
- e. Mitochondria

7. Ribosomes make what type of organic substances?

- a. Carbohydrates
- b. Proteins
- c. Fats
- d. Nucleic Acids
- e. Simple Sugars

Ribosome



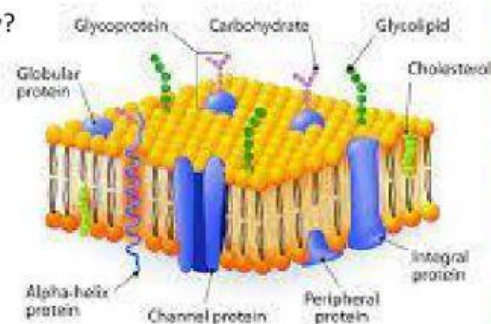
8. True or False: The cell membrane allows ALL substances into the cell.

- a. TRUE
- b. FALSE

CELL MEMBRANE

9. Which of the following is where the cell gets its energy?

- a. Membrane
- b. Lysosomes
- c. Ribosomes
- d. Nucleus
- e. Mitochondria



10. The nucleus, ribosomes, and lysosomes can be classified as:

- a. Bacteria
- b. The envelope of the cell
- c. Organelles
- d. The cytoplasmic region
- e. DNA

The parts of a cell	
1	Nucleus
2	Mitochondria
3	Mitochondrion
4	Rough endoplasmic reticulum
5	Lysosome
6	Microfilaments
7	Vacuole
8	Ribosomes
9	Golgi complex
10	Cell membrane
11	Centriole

