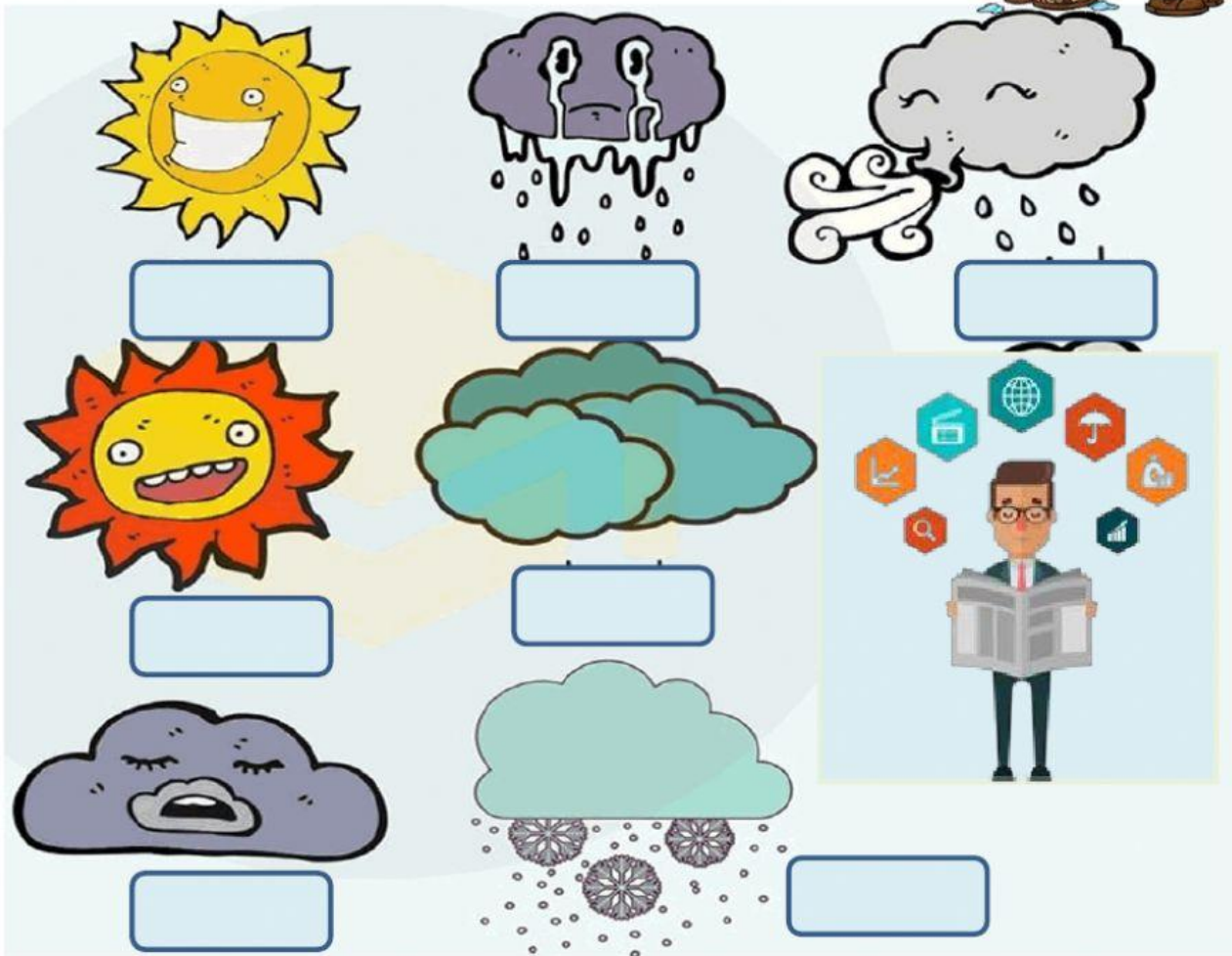


1. Let's listen and then drag the name of weather and drop in the correct blank.

What's the weather like today?



Snowy

Sunny

Windy

Cloudy

Rainy

Hot

Cold

2. Let's listen and then draw lines to match the weather with the correct words.



Sunny



Rainy



Hot



Cloudy



Cold



Windy



Snowy

3. Let's listen and decide the statements are true or false.



It's cold



It's snowy



It's rainy



It's sunny



It's rainy



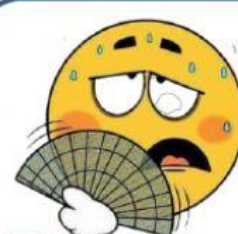
It's cold



It's windy



It's hot



It's cold

