

# Standard One

Term One Test 2021

Science & Agri-Science



## Instructions for Test

1. There are two sections in this test paper.
2. Read each question carefully.
3. Answer all questions.

**Section 1- Multiple Choice**  
**Circle the correct answer.**

1. Animals with backbones are called \_\_\_\_\_.  
(A) invertebrates  
(B) insects  
(C) vertebrates
  
2. An example of an invertebrate is a \_\_\_\_\_.  
(A) snake  
(B) penguin  
(C) mosquito
  
3. All of these groups of animals are vertebrates except  
(A) birds  
(B) fish  
(C) insects
  
4. The parts of a plant are \_\_\_\_\_.  
(A) leaf, roots, stem, flower  
(B) roof, stem, flour, seed  
(C) flour, stem, roots, leaf

5. Which of the following groups are all living things?
- (A) fan, tiger, dog, cat
  - (B) television, bag, bicycle
  - (C) shark, jellyfish, giraffe
  - (D) parrot, monkey, doll
6. Plants can be used for all the following EXCEPT:
- (A) Medicine
  - (B) Building
  - (C) Writing
  - (D) Fuel
7. Land Clearing can be done using which of the following:
- (A) Planting
  - (B) Cutlass
  - (C) Cars
  - (D) Ploughing
8. Ploughing is the process of:
- (A) Picking the crops
  - (B) Collecting Milk
  - (C) Cutting the grass
  - (D) Tilling the soil

9. Our ancestors did all the following agricultural jobs except:

- (A) Market vendor
- (B) House painter
- (C) Spray for pests
- (D) Plant Cocoa

10. A dairy farmer:

- (A) Plants rice
- (B) Keeps cows
- (C) Sells honey
- (D) Keeps chickens

11. A spider is \_\_\_\_\_.

- (A) a vertebrate
- (B) a non-living thing
- (C) an invertebrate
- (D) a plant

## Section 2

Fill in the blanks.

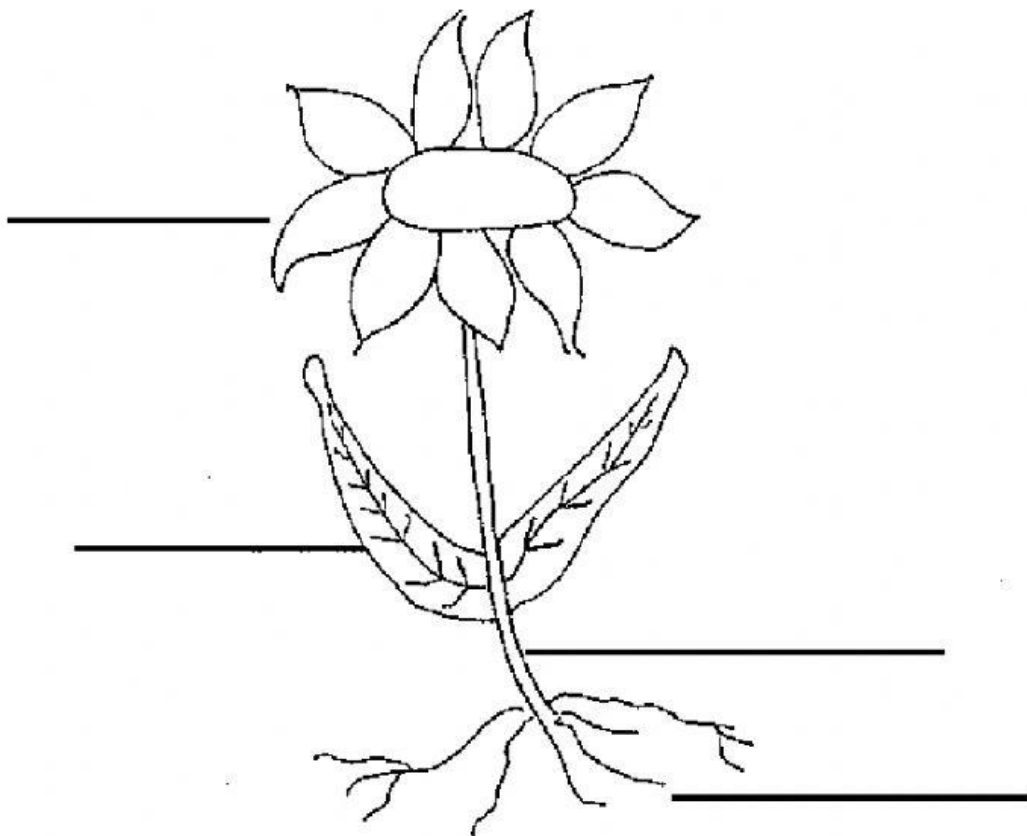
1. Complete the diagram using words from the box.

roots

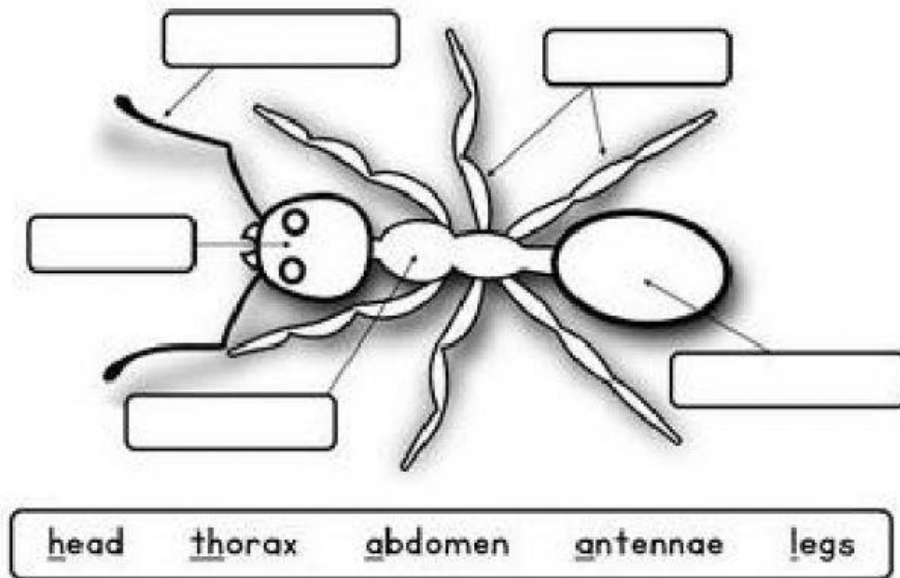
leaf

stem

flower



2. Complete the diagram using words from the box.



3. Write the name of the animals in box below in the correct appropriate column.

<b>Fish</b>	<b>frog</b>	<b>jelly-fish</b>
<b>worms</b>	<b>parrot</b>	<b>crab</b>

<b>Vertebrate</b>	<b>Invertebrate</b>
1)	1)
2)	2)
3)	3)

4. Complete the table below by typing 2 **Living things** and 2 **Non-living things** from the words listed below.

**WORD BANK**

laptop	lizard	teddy bear	parrot
--------	--------	------------	--------

<b>Living Things</b>	<b>Non-Living Things</b>
1)	1)
2)	2)



5. Place the Events in the correct order:

Harvesting	1.
Planting	2.
Land Clearing	3.
Land Preparation	4.
Pest control	5.

6. Use words from the word bank to fill in the spaces:

Word Bank:		
tea	pest control	eggs
medicinal	mixed Agriculture	Crop

- Shadow Beni, Bay leaf and Turmeric are all \_\_\_\_\_ plants.
- The most common way to use these plants are in \_\_\_\_\_.
- Spraying insecticides are a from of \_\_\_\_\_.
- Our Ancestors had \_\_\_\_\_ practices.
- Our grandparents would have cows for milk and chickens for \_\_\_\_\_.
- The people of the old would practice \_\_\_\_\_ farming by growing tomatoes.



**\*\*End of Test\*\***