

Test 4

Part 1

1 Which is Tom's mother?



A ☐

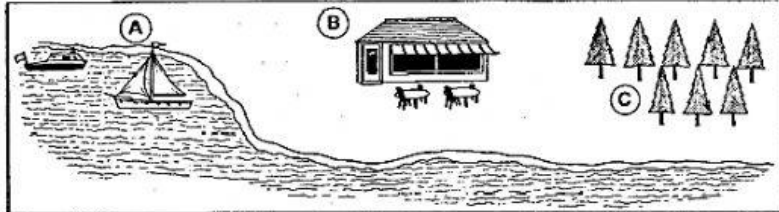


B ☐



C ☐

2 Where will the beach party be?



A ☐

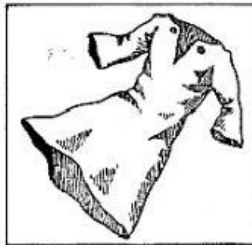
B ☐

C ☐

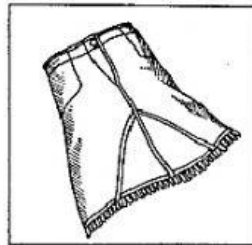
3 What will Fiona wear to the dance?



A ☐

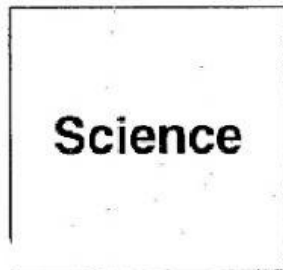


B ☐

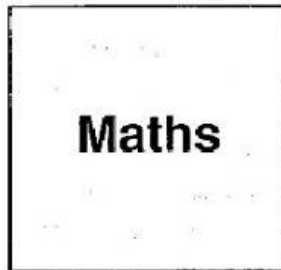


C ☐

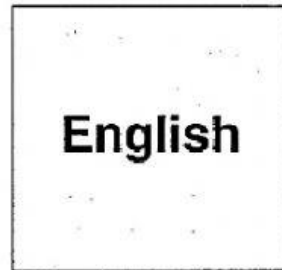
4 What homework is the girl doing now?



A ☐

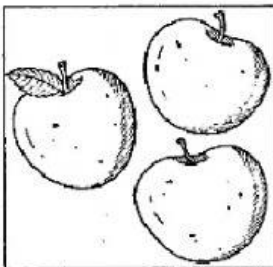


B ☐

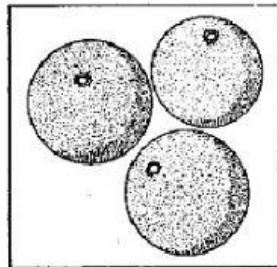


C ☐

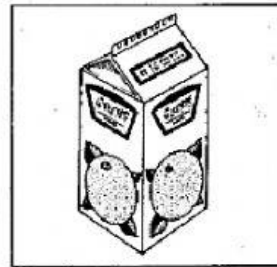
5 What's David going to buy?



A ☐



B ☐



C ☐

Part 2

PEOPLE

- 6 Sally ☐
- 7 Vivienne ☐
- 8 Roger ☐
- 9 Frank ☐
- 10 Deborah ☐

AGES

- A two
- B five
- C seven
- D ten
- E thirteen
- F fifteen
- G eighteen
- H twenty

Part 3

- 11 In the park, there is
- A a café.
- B a hotel.
- C a guest-house.
- 12 The village has a
- A swimming pool.
- B cinema.
- C food shop.
- 13 You can only go through the park
- A by car.
- B by bus.
- C on foot.
- 14 On weekdays, a visit to the park costs
- A \$12.
- B \$13.
- C \$16.
- 15 In the park, the woman will see
- A animals.
- B flowers.
- C snow.

☐
☐
☐☐
☐
☐☐
☐
☐☐
☐
☐☐
☐
☐

Part 4

TRIP TO MANCHESTER	
Go to Manchester in:	October
Temperature in autumn:	16 degrees
Will need to wear:	17
Name of train station in London:	18
Cost of train:	19 £
Take Sarah some:	20

Part 5

THE REDFERN MUSEUM	
Open:	Monday to Thursday
You can see:	
Downstairs	21 old
Upstairs: pictures by	22 artists
Concerts during month of:	23
Student ticket:	24 £
Telephone number:	25