



**Colegio Nourish**  
**2021-2022**  
**November Exam**

**2<sup>nd</sup>. Grade**  
**Reading**

**Name:** \_\_\_\_\_ **List #** \_\_\_\_\_

**Date:** \_\_\_\_\_ **Teacher:** Jacklenis Salazar

**I. Reading Comprehension: read and answer the questions.**

Koalas are mammals that live in the forest in Australia. It is not correct to call them Koala bears because they are not bears. They do have soft thick fur and ears with long white hairs on the tips. Koalas sleep during the day and eat at night. Koalas eat leaves and bark from different trees, but eucalyptus leaves are their favorite. Because koalas eat so many eucalyptus leaves, they often smell like certain kinds of cough drop. Female koalas have a pouch where a baby koala lives. A baby koala is called joey.

1. What is the principal character of the text?

- a. The shark
- b. The Monkeys
- c. The Koala

2. What do Koalas eat?

- a. Chocolate
- b. Ice cream
- c. Leaves

3. Koalas sleep during the day.

**True      False**

4. Is the text an informational text or a fiction text?

**Informational text**

**fiction text**

5. Where do the Koalas live?

- a. In Mexico
- b. In Australia
- c. In Canada

II. Read the story that I will show you, and then write what you understood about it. Say if it is a fiction story or an informational text. (6).

III. Select the word that completes the sentence.

7. Animals and plants live in a \_\_\_\_\_

**habitat**

**colonies**

**grazers**

8. \_\_\_\_\_ are animals that eat grass.

**borrows**

**grazers**

**colonies**

9. Ants live in small \_\_\_\_\_

**colonies**

**houses**

**burrows**

10. \_\_\_\_\_ are underground. Rabbits live there.

**prairie**

**burrows**

**habitat**

11. \_\_\_\_\_ is a large place without big trees.

**grazers**

**colonies**

**prairie**

IV. Select the correct name for each picture. ( 12-15).



moist      arrange      certain

V. Select the correct word.

- 16. soggy/ sogi
- 17. quitly/quitely
- 18. glow/glouw

VI. Read the sentence. Click on the correct word to finish the sentence.

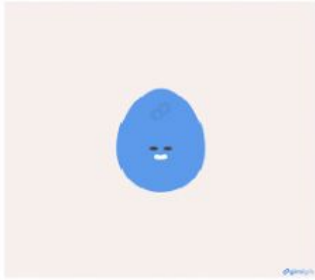
19. \_\_\_\_\_are sea birds. They live in the Antarctic.



- flock

- penguin

20. Eggs have an \_\_\_\_\_ shape.



- oval
- waddle