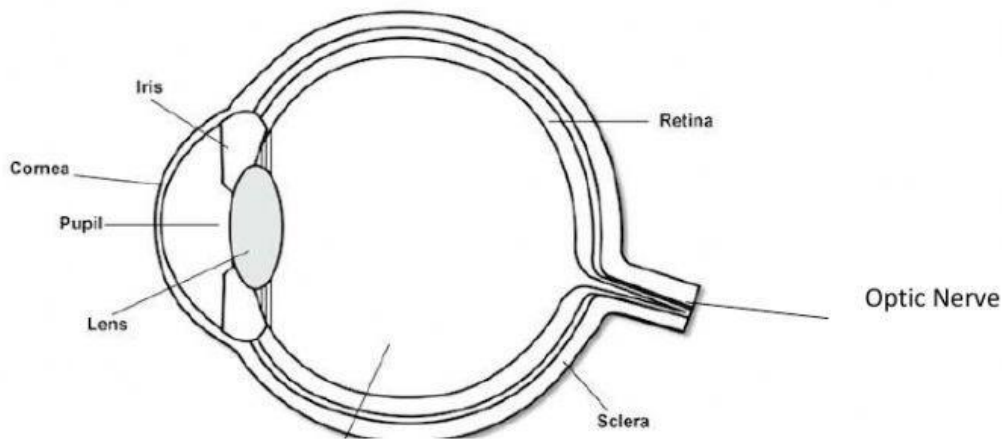


The Eye



Use the words from the diagram above to complete these sentences.

Begin your answers with a common letter. For example: **pupil**

1. The is the coloured part of the eye.
2. The sends messages to the brain about what we are seeing.
3. The is the white part of the eye that allows our eyeball to move as well as protect the insides.
4. The is the front part of the eye that is clear like glass and has no blood vessels in it.
5. The sits directly behind the pupil and gets thicker and thinner depending on how far or near the object is.

6. The is at the back of the eye and the images that are shown on it appears upside down.

7. The is the black dot in the center of the iris that allows for light to pass through.